



COPPER CATALOGUE



COPPER CATALOGUE

CONTENTS

Company Profile	P5
OSI-LINK Category 6	P7
Category 6	P15
Category 6A	P29
Category 7/7A	P43
Category 8	P49
Miscellaneous Cables	P57
110 Cross Connect System	P62
Copper Tools & Testers	P72



COMPANY PROFILE

Established in the United Kingdom in 2012, Osi-lan Ltd stands as a pioneer in copper structured cabling, fibre optic cables, FTTx networks, data centre and cabinet solutions.

Our expert teams boasts extensive experience in designing and implementing network solutions for different organisations and projects. This wealth of knowledge enables us to manufacture cutting-edge products that consistently exceed industry standards for quality and performance.

Our expertise spans voice, data, fibre optic cables, FTTH blown fibre and ducted network solutions, all under the “OSILAN” brand.

Since inception, Osilan has experienced sustained growth, driven by endorsements and an unwavering commitment to service excellence. Today, we take pride not only in operating and distributing our products in the UK, but also in the Middle East and Africa, both directly and through our distributor and partner network, expanding our global influence. Our success speaks to the exceptional quality of the Osilan brand.

We offer a range of products which have each been manufactured to meet and exceed industry standards.

Our range includes:

- Copper
- Fibre
- Cabinets and accessories
- Voice

Osilan's first priority is customer service and our range of networking solutions are each delivered by an industry expert.

Our services include:

- Structured cabling system design
- Fibre network design
- Wireless network design

For more information about Osilan, visit our website www.osilan.co.uk,

Or contact us today on

+44 (0)208 133 4420





OSI-LINK CATEGORY 6



CATEGORY 6

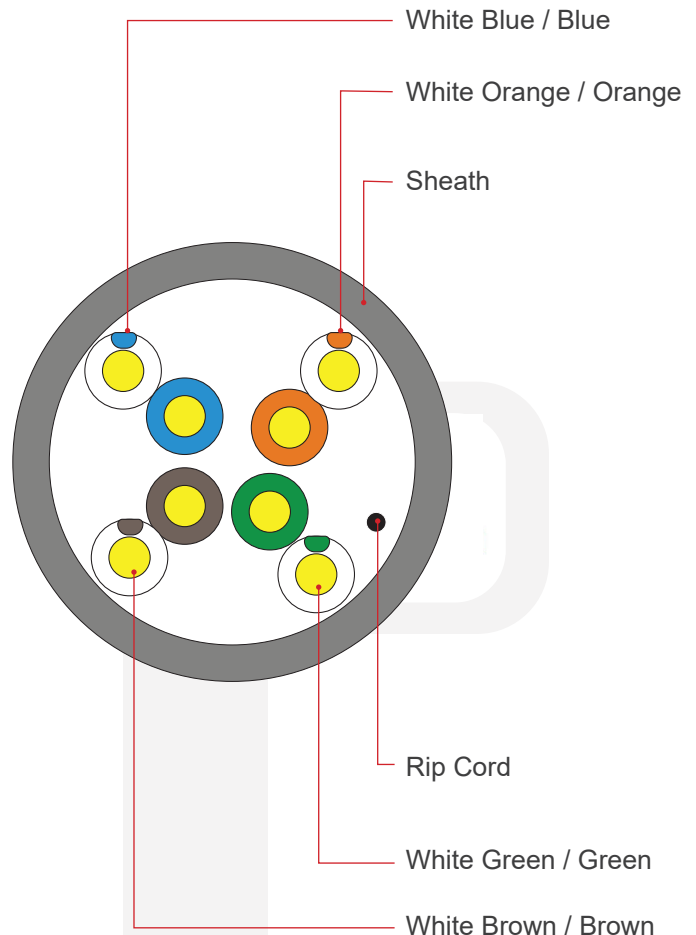
LINK UTP COPPER CABLE

OSI-LINK is flexible and cost-effective solution that is fully comply with category 6/class e and ideal for use in lan protocols and applications such as:

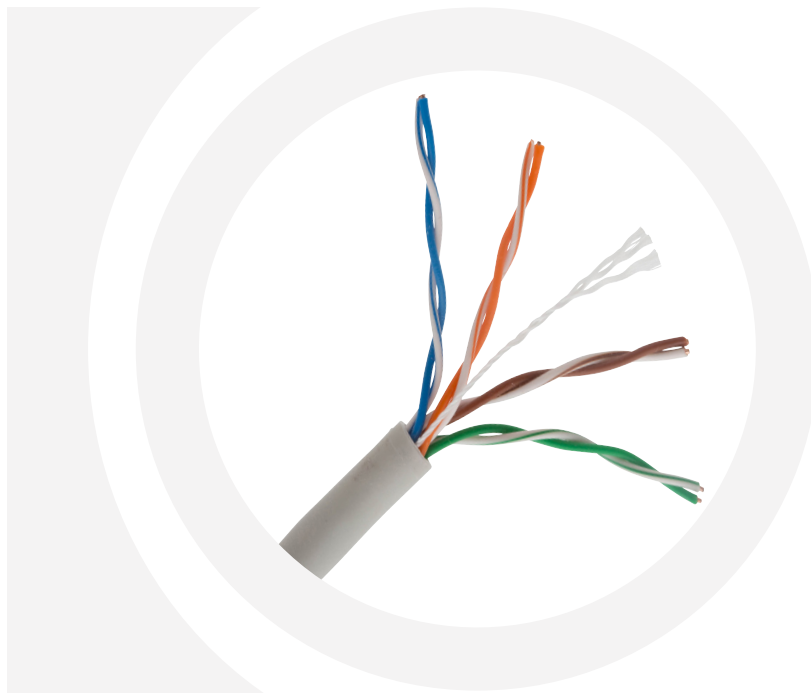
- o 10BASE-T (Ethernet), 100BASE-T (Fast Ethernet), 1000BASE-T (Gigabit Ethernet).
- o 155 Mb/s ATM, 622 Mb/s ATM, 1.2 Gb/s ATM, Token Ring 4/16 and ISDN.
- o POE, Voice, Broadband videos transmission at frequencies up to 250 MHz.

FEATURES AND BENEFITS

- o Standard Compliance: ANSI/TIA-568-C.2 Category 6, ISO 11801 2nd Edition Class E channels standards and EN 50173:2007 EN 50288-3-1:2013.
- o OSILAN Category 6 Solution provides End to end solution in unshielded designs.
- o The performance headroom provided by OSILAN Category 6 Solution makes it a reliable and safe choice of cabling to support Gigabit Ethernet.
- o Choice of U/UTP 24 AWG cable available in PVC
- o Installation temperature range: -30°C to 50°C.
- o Temperature (Operation): -10°C to +60°C.
- o Channel characterized to 250 MHz, according to the standards.
- o Descending length cable markings enable easy identification of remaining cable which reduces installation time and cable scrap.



OSI-LINK CAT6



OSI-LINK CATEGORY 6

OSI-LINK CATEGORY 6 U/UTP PVC

PART NO.	DESCRIPTION	PACKING
U6L-C0424-IG	OSI-LINK Category 6 U/UTP Cables, 4Pairs, 24AWG Solid Copper, PVC Sheath, International Grey	305m Box
U6L-C0424-BU	OSI-LINK Category 6 U/UTP Cables, 4Pairs, 24AWG Solid Copper, PVC Sheath, Blue	305m Box
U6L-C0424-OR	OSI-LINK Category 6 U/UTP Cables, 4Pairs, 24AWG Solid Copper, PVC Sheath, Orange	305m Box
U6L-C0424-WH	OSI-LINK Category 6 U/UTP Cables, 4Pairs, 24AWG Solid Copper, PVC Sheath, White	305m Box
U6L-C0424-RD	OSI-LINK Category 6 U/UTP Cables, 4Pairs, 24AWG Solid Copper, PVC Sheath, Red	305m Box
U6L-C0424-GR	OSI-LINK Category 6 U/UTP Cables, 4Pairs, 24AWG Solid Copper, PVC Sheath, Green	305m Box
U6L-C0424-YL	OSI-LINK Category 6 U/UTP Cables, 4Pairs, 24AWG Solid Copper, PVC Sheath, Yellow	305m Box
U6L-C0424-VL	OSI-LINK Category 6 U/UTP Cables, 4Pairs, 24AWG Solid Copper, PVC Sheath, Violet	305m Box

PATCH PANELS

OSI-LINK CATEGORY 6

DESCRIPTION:

OSI-LINK category 6 patch panels comply with the current standards for enhanced category 6/class e. all outlets are numerically identified with an additional writeable surface for ease of port naming.

each panel has integrated rear cable management to make the installation easier.

a choice of port density –24 port 1u, 48 port 2u– is available to suit all applications. each panel is supplied with cable ties, panel mounting accessories and short form installation instructions.



FEATURES AND BENEFITS

- Category 6 compliant to ISO IEC11801 & amendments, EN50173-1, ANSI/EIA/TIA 568C Series
- Available in two Versions:
 - Modular Patch Panel: Accept OSILAN Modules for UTP which snap in and out for easy moves, adds, and changes (Modular Patch Panel).
 - Category 6 compliant Patch Panel using patented state of the art printed circuit technology.
- Category 6 Patch Panel High impact, flame retardant plastic for unshielded cables.
- Pre-printed numbers above each port for easy identification
- Mount to standard EIA racks with optional extender bracket.
- Angled patch panels facilitate proper bend radius control and minimize the need for horizontal cable managers.
- Power Sum Compliant
- Supports Gigabit Ethernet
- Supports IEEE 802.3af, 802.3at, and 802.3bt type 3 and 4 for PoE applications up to 100 W
- Wiring Specification : T568A & T568B
- Connecting Tools : 110 Punch tools , Krone Type termination tools
- Operating temperature: -10°C to 60°C
- Storage temperature: -40°C to 70°C
- Relative humidity: Max. non-condensing 93%



OSI-LINK MODULAR PATCH PANEL

OSI-LINK CATEGORY 6 COMPLIANT
PATCH PANEL - UNSCREENED

PART NO.	DESCRIPTION
PPML-24P-1U-B	OSI-LINK 24 Port Modular Patch Panel Empty, 1U Sizes, 19", Accept 24 Jack Modules,Black
PPML-48P-2U-B	OSI-LINK 48 Port Modular Patch Panel Empty, 2U Sizes, 19", Accept 48 Jack Modules,Black
PPMAL-24P-1U-B	OSI-LINK 24 Port Modular Angled Patch Panel Empty, 1U Sizes, 19", Accept 24 Jack Modules,Black
PPMAL-48P-2U-B	OSI-LINK 48 Port Modular Angled Patch Panel Empty, 2U Sizes, 19", Accept 48 Jack Modules,Black

PART NO.	DESCRIPTION
PPIL-U6-24P-1U-BK	OSI-LINK Category 6 Unscreened Patch Panel 24 Port 1U - Black
PPIL-U6-48P-2U-BK	OSI-LINK Category 6 Unscreened Patch Panel 48 Port 2U - Black
PPIL-U6-24P-1U-BU	OSI-LINK Category 6 Unscreened Patch Panel 24 Port 1U - Blue
PPIL-U6-48P-2U-BU	OSI-LINK Category 6 Unscreened Patch Panel 48 Port 2U - Blue
PPIL-U6-24P-1U-GR	OSI-LINK Category 6 Unscreened Patch Panel 24 Port 1U - Green
PPIL-U6-48P-2U-GR	OSI-LINK Category 6 Unscreened Patch Panel 48 Port 2U - Green
PPIL-U6-24P-1U-RD	OSI-LINK Category 6 Unscreened Patch Panel 24 Port 1U - Red
PPIL-U6-48P-2U-RD	OSI-LINK Category 6 Unscreened Patch Panel 48 Port 2U - Red

JACK MODULES

OSI-LINK CATEGORY6

OSI-LINK Unshielded Snap-in-Jacks offer true Category 6/Class E component performance.

The Jacks are suitable for mounting in range of housings from patch panels, faceplates, floor boxes, and work areas distribution enclosures.

FEATURES AND BENEFITS

- Category 6 Unscreened Keystone – Punch Down
- ISO/IEC category: Category 6 performance connectors ANSI/TIA-968-A. IEC 60603-7. EIA/TIA 568-C.2 series: Category 6/Class E performance from 1 to 250 MHz.
- Terminates full range of 22 – 26 AWG conductors
- Operating Temperature : -10°C to 60°C
- Storage Temperature: -40°C to 70°C.
- Each jack is 100% tested to ensure NEXT and RL performance and is individually serialized for traceability.
- Connector Body: High-impact, fire-retardant plastic rated UL 94V-0.
- Contacts plated with 50 micro inches of gold.
- Accept 6 and 8-position modular plugs without damage.
- Number of IDC Termination: Minimum 200 re terminations.
- Wiring Code: T568A and T568B wiring schemes.
- Multiple colours available.



UNSCREENED KEYSTONE JACK, TOOL-LESS LINK VERSION- BUTTERFLY STYLE

PART NO.	DESCRIPTION
JMU61801L-WH	OSI-LINK Category 6 Unscreened butterfly style Tool-less Keystone Jack - White
JMU61801L-BK	OSI-LINK Category 6 Unscreened butterfly style Tool-less Keystone Jack - Black
JMU61801L-GR	OSI-LINK Category 6 Unscreened butterfly style Tool-less Keystone Jack - Green
JMU61801L-BU	OSI-LINK Category 6 Unscreened butterfly style Tool-less Keystone Jack - Blue

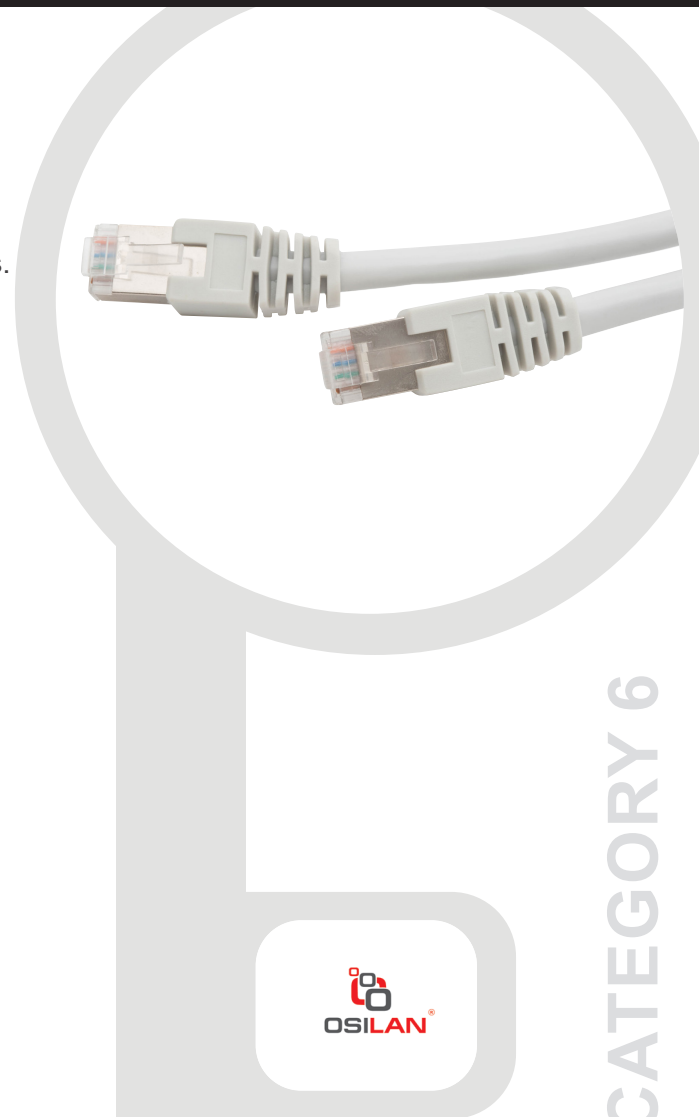
PATCH CORDS

OSI-LINK CATEGORY 6

OSI-LINK Category 6 Unscreened are manufactured and tested individually to comply with ISO11801, EN 50173 Category 6 and EIA/TIA standards for enhanced performance. Each cable consists of 4 pairs stranded 24AWG conductors twisted together with varying lay lengths. Multiple colours are available for outer jacket sheath to enhance application identifications where necessary.

FEATURES AND BENEFITS

- Exceeds ANSI/TIA-568-C.2 Category 6, ISO 11801 Category 6/Class E standards and EN 50173 Category 6.
- Supports IEEE 802.3af, 802.3at, and 802.3bt type 3 and 4 for PoE applications up to 100 W.
- Constructed of Category 6, 24 AWG UTP stranded cable.
- Cables are fitted with plastic strain relief boots, for applications that may require continuous patching or a degree of stress relief applied.
- Plug contacts plated with 50 micro inches of gold for superior performance
- Each patch cord is 100% performance tested to component limits and wired to T568B.
- Plug meets all applicable ANSI/TIA-1096-A requirements and IEC 60603-7 specifications.
- Temperature (Installation): -30°C to +50°C
- Temperature (Operation): -20°C to +75°C
- Supports Gigabit Ethernet.
- Multiple colours available.
- Variable lengths (0.5,1,2,3,5,7,10,15,20,30m)



OSI-LINK CATEGORY 6

CATEGORY 6A U/UTP PATCH CORDS

24 AWG STRANDED, PVC

PART NO.	DESCRIPTION
PCL-U6-C0424-IG-03M	OSI-LINK Category 6 U/UTP Patch Cords, PVC Sheath , 3m ,International Gray
PCL-U6-C0424-GR-03M	OSI-LINK Category 6 U/UTP Patch Cords, PVC Sheath , 3m ,Green
PCL-U6-C0424-BU-03M	OSI-LINK Category 6 U/UTP Patch Cords, PVC Sheath , 3m ,Blue
PCL-U6-C0424-OR-03M	OSI-LINK Category 6 U/UTP Patch Cords, PVC Sheath , 3m ,Orange
PCL-U6-C0424-WH-03M	OSI-LINK Category 6 U/UTP Patch Cords, PVC Sheath , 3m ,White
PCL-U6-C0424-YL-03M	OSI-LINK Category 6 U/UTP Patch Cords, PVC Sheath , 3m ,Yellow
PCL-U6-C0424-VL-03M	OSI-LINK Category 6 U/UTP Patch Cords, PVC Sheath , 3m ,Violet







CATEGORY 6



CATEGORY 6

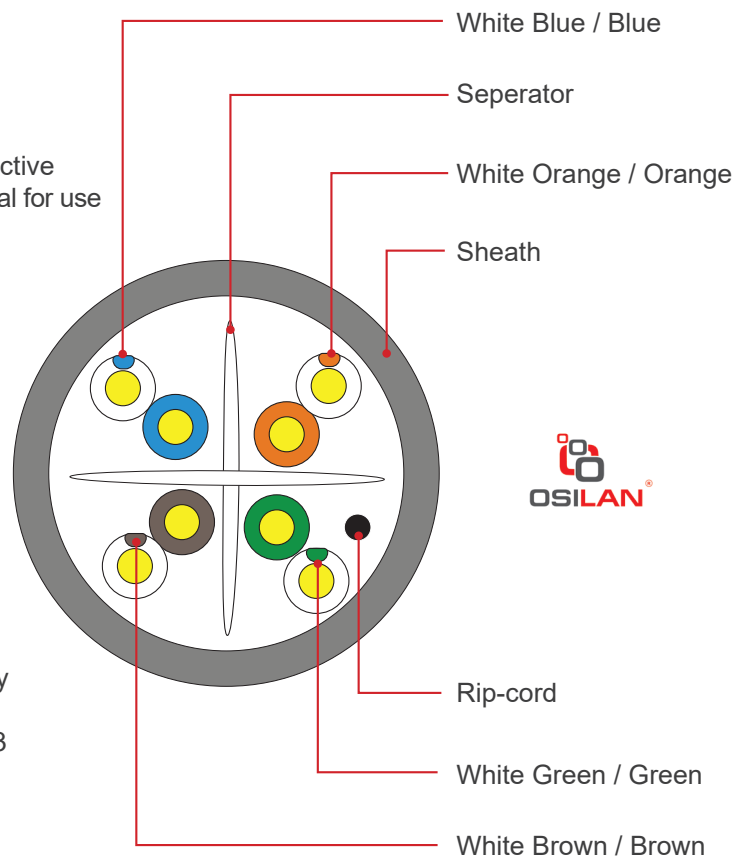
U/UTP COPPER CABLE

OSILAN's Category 6 cables are a flexible and cost effective solution that fully complies with category 6/Class E and ideal for use in LAN protocols and applications such as.

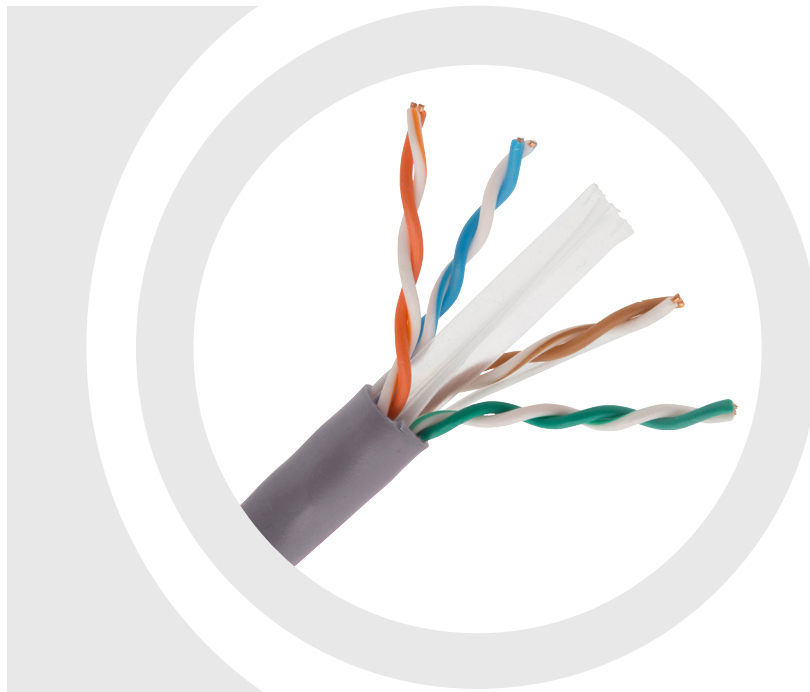
- o 10BASE-T (Ethernet), 100BASE-T (Fast Ethernet), 1000BASE-T (Gigabit Ethernet),
- o 155 Mb/s ATM, 622 Mb/s ATM, 1.2 Gb/s ATM, Token Ring 4/16 and ISDN
- o POE, Voice, Broadband videos transmission at frequencies up to 350 MHz

FEATURES AND BENEFITS

- o Standard Compliance: ANSI/TIA-568-C.2 Category 6, ISO 11801 2nd Edition Class E channels standards and EN 50173:2007 EN 50288-3-1:2013
- o OSILAN's Category 6 cable provides end to end solutions in both shielded and unshielded designs
- o The performance headroom provided by Osilan's Category 6 Solution makes it a reliable and safe choice of cabling to support Gigabit Ethernet
- o **Installation temperature range:**
-30°C to 50°C
- o **Temperature (Operation):**
-10°C to +60°C
- o Channel characterized to 350 MHz , 100 MHz above the standards (250 MHz)
- o Descending length cable markings enable easy identification of remaining cable which reduces installation time and cable waste
- o 25 Years System Warranty



CATEGORY 6



CATEGORY 6

OSILAN CATEGORY 6 U/UTP PVC

OSILAN CATEGORY 6 U/UTP LSZH

PART NO.	DESCRIPTION	PACKING	PART NO.	DESCRIPTION	PACKING
U6-C0423-IG	Category 6 U/UTP Cables, 4Pairs, 23AWG Solid Copper, PVC Sheath Colour International Grey	305m Box	U6-H0423-IG	Category 6 U/UTP Cables, 4Pairs, 23AWG Solid Copper, LSZH Sheath Colour International Grey	305m Box
U6-C0423-BU	Category 6 U/UTP Cables, 4Pairs, 23AWG Solid Copper, PVC Sheath Colour Blue	305m Box	U6-H0423-BU	Category 6 U/UTP Cables, 4Pairs, 23AWG Solid Copper, LSZH Sheath Colour Blue	305m Box
U6-C0423-OR	Category 6 U/UTP Cables, 4Pairs, 23AWG Solid Copper, PVC Sheath Colour Orange	305m Box	U6-H0423-OR	Category 6 U/UTP Cables, 4Pairs, 23AWG Solid Copper, LSZH Sheath Colour Orange	305m Box
U6-C0423-WH	Category 6 U/UTP Cables, 4Pairs, 23AWG Solid Copper, PVC Sheath Colour White	305m Box	U6-H0423-WH	Category 6 U/UTP Cables, 4Pairs, 23AWG Solid Copper, LSZH Sheath Colour White	305m Box
U6-C0423-RD	Category 5e F/UTP Cables, 4Pairs, 23AWG Solid Copper, PVC Sheath Colour Red	305m Box	U6-H0423-RD	Category 6 U/UTP Cables, 4Pairs, 23AWG Solid Copper, LSZH Sheath Colour Red	305m Box
U6-C0423-GR	Category 6 U/UTP Cables, 4Pairs, 23AWG Solid Copper, PVC Sheath Colour Green	305m Box	U6-H0423-GR	Category 6 U/UTP Cables, 4Pairs, 23AWG Solid Copper, LSZH Sheath Colour Green	305m Box
U6-C0423-YL	Category 6 U/UTP Cables, 4Pairs, 23AWG Solid Copper, PVC Sheath Colour Yellow	305m Box	U6-H0423-YL	Category 6 U/UTP Cables, 4Pairs, 23AWG Solid Copper, LSZH Sheath Colour Yellow	305m Box
U6-C0423-VL	Category 6 U/UTP Cables, 4Pairs, 23AWG Solid Copper, PVC Sheath Colour Violet	305m Box	U6-H0423-VL	Category 6 U/UTP Cables, 4Pairs, 23AWG Solid Copper, LSZH Sheath Colour Violet	305m Box

CATEGORY 6

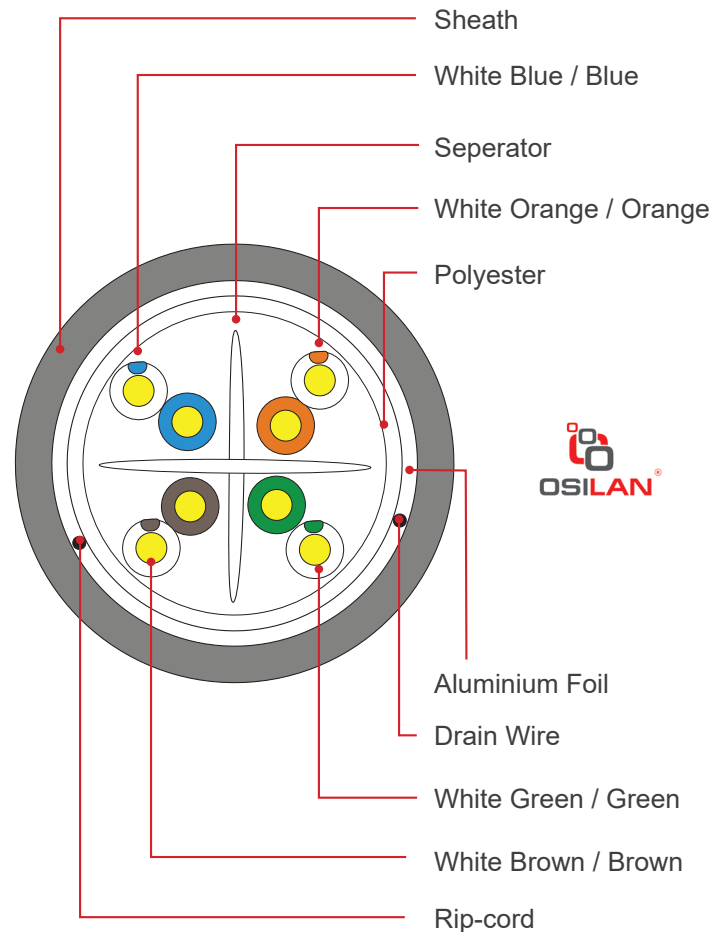
F/UTP COPPER CABLE

OSILAN's Category 6 cables are a flexible and cost effective solution that fully complies with category 6/Class E and ideal for use in LAN protocols and applications such as.

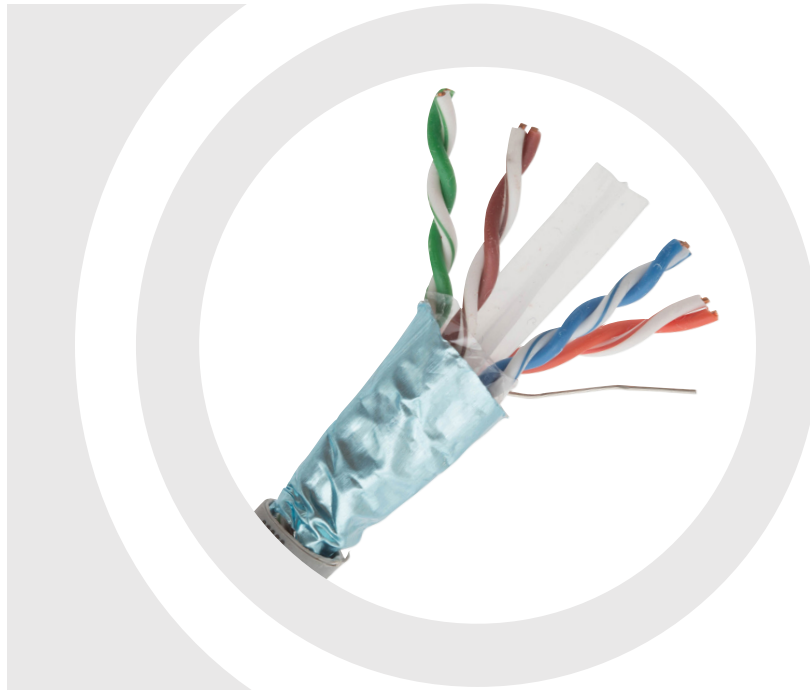
- 10BASE-T (Ethernet), 100BASE-T (Fast Ethernet), 1000BASE-T (Gigabit Ethernet),
- 155 Mb/s ATM, 622 Mb/s ATM, 1.2 Gb/s ATM, Token Ring 4/16 and ISDN
- POE, Voice, Broadband videos transmission at frequencies up to 350 MHz

FEATURES AND BENEFITS

- **Standard Compliance:**
ANSI/TIA-568-C.2 Category 6, ISO 11801 2nd Edition Class E channels standards and EN 50173:2007 EN 50288-3-1:2013
- Osilan's Category 6 cable provides end to end solutions in both shielded and unshielded designs
- The performance headroom provided by Osilan's Category 6 Solution makes it a reliable and safe choice of cabling to support Gigabit Ethernet
- **Drain Wire:**
0.45mm Tinned Copper (TC)
Available in Screened Cables
- **Installation temperature range:**
-30°C to 50°C
- **Temperature (Operation):**
-10°C to +60°C
- Channel characterized to 350 MHz, 100 MHz above the standards (250 MHz)
- Descending length cable markings enable easy identification of remaining cable which reduces installation time and cable waste
- 25 Years System Warranty



CATEGORY 6



CATEGORY 6

OSILAN CATEGORY 6 F/UTP PVC

OSILAN CATEGORY 6 F/UTP LSZH

PART NO.	DESCRIPTION	PACKING	PART NO.	DESCRIPTION	PACKING
FU6-C0423-IG	Category 6 F/UTP Cables, 4Pairs, 23AWG Solid Copper, PVC Sheath Colour International Grey	305m Box	FU6-H0423-IG	Category 6 F/UTP Cables, 4Pairs, 23AWG Solid Copper, LSZH Sheath Colour International Grey	305m Box
FU6-C0423-BU	Category 6 F/UTP Cables, 4Pairs, 23AWG Solid Copper, PVC Sheath Colour Blue	305m Box	FU6-H0423-BU	Category 6 F/UTP Cables, 4Pairs, 23AWG Solid Copper, LSZH Sheath Colour Blue	305m Box
FU6-C0423-OR	Category 6 F/UTP Cables, 4Pairs, 23AWG Solid Copper, PVC Sheath Colour Orange	305m Box	FU6-H0423-OR	Category 6 F/UTP Cables, 4Pairs, 23AWG Solid Copper, LSZH Sheath Colour Orange	305m Box
FU6-C0423-WH	Category 6 F/UTP Cables, 4Pairs, 23AWG Solid Copper, PVC Sheath Colour White	305m Box	FU6-H0423-WH	Category 6 F/UTP Cables, 4Pairs, 23AWG Solid Copper, LSZH Sheath Colour White	305m Box
FU6-C0423RD	Category 5e F/UTP Cables, 4Pairs, 23AWG Solid Copper, PVC Sheath Colour Red	305m Box	FU6-H0423-RD	Category 6 F/UTP Cables, 4Pairs, 23AWG Solid Copper, LSZH Sheath Colour Red	305m Box
FU6-C0423GR	Category 6 F/UTP Cables, 4Pairs, 23AWG Solid Copper, PVC Sheath Colour Green	305m Box	FU6-H0423-GR	Category 6 F/UTP Cables, 4Pairs, 23AWG Solid Copper, LSZH Sheath Colour Green	305m Box
FU6-C0423-YL	Category 6 F/UTP Cables, 4Pairs, 23AWG Solid Copper, PVC Sheath Colour Yellow	305m Box	FU6-H0423-YL	Category 6 F/UTP Cables, 4Pairs, 23AWG Solid Copper, LSZH Sheath Colour Yellow	305m Box
FU6-C0423-VL	Category 6 F/UTP Cables, 4Pairs, 23AWG Solid Copper, PVC Sheath Colour Violet	305m Box	FU6-H0424-VL	Category 6 F/UTP Cables, 4Pairs, 23AWG Solid Copper, LSZH Sheath Colour Violet	305m Box

CATEGORY 6

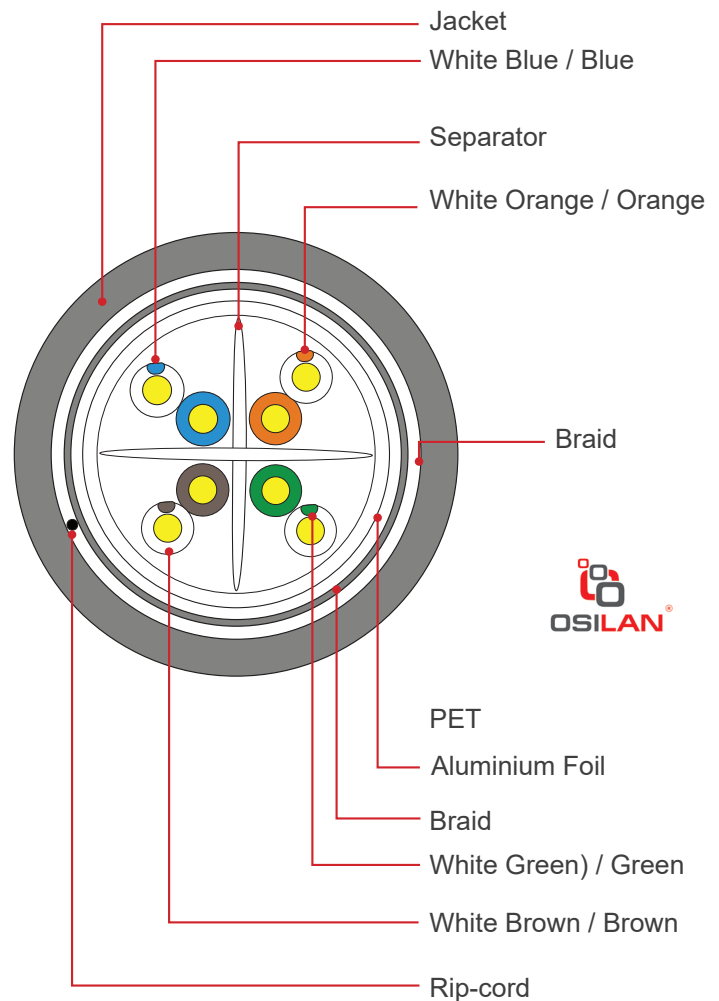
SF/UTP COPPER CABLE

OSILAN's Category 6 cables are a flexible and cost effective solution that fully complies with category 6/Class E and ideal for use in LAN protocols and applications such as:

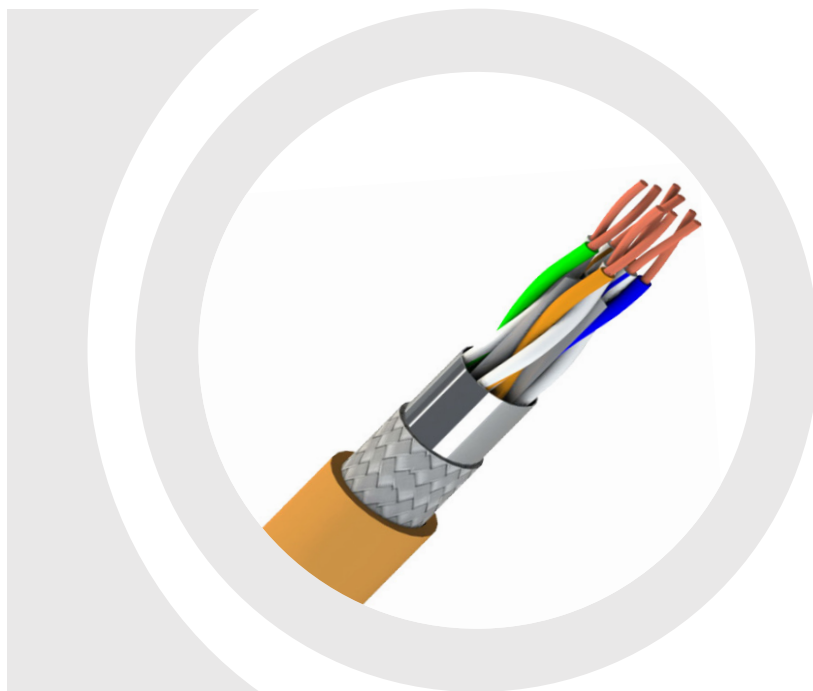
- 10BASE-T (Ethernet), 100BASE-T (Fast Ethernet), 1000BASE-T (Gigabit Ethernet),
- 155 Mb/s ATM, 622 Mb/s ATM, 1.2 Gb/s ATM, Token Ring 4/16 and ISDN
- POE, Voice, Broadband videos transmission at frequencies up to 350 MHz

FEATURES AND BENEFITS

- **Standard Compliance:**
ANSI/TIA-568-C.2 Category 6, ISO 11801 2nd Edition Class E channels standards and EN 50173:2007 EN 50288-3-1:2013
- OSILAN's Category 6 cable provides end to end solutions in both shielded and unshielded designs
- The performance headroom provided by Osilan's Category 6 Solution makes it a reliable and safe choice of cabling to support Gigabit Ethernet
- **Drain Wire:**
0.45mm Tinned Copper (TC)
Available in Screened Cables
- **Installation temperature range:**
-30°C to 50°C
- **Temperature (Operation):**
-10°C to +60°C
- Channel characterized to 350 MHz, 100 MHz above standards (250 MHz)
- Descending length cable markings enable easy identification of remaining cable which reduces installation time and cable waste
- 25 Years System Warranty



CATEGORY 6



CATEGORY 6

OSILAN CATEGORY 6 SF/UTP PVC

OSILAN CATEGORY 6 SF/UTP LSZH

PART NO.	DESCRIPTION	PACKING	PART NO.	DESCRIPTION	PACKING
SFU6-C0423-IG	Category 6 SF/UTP Cables, 4Pairs, 23AWG Solid Copper, PVC Sheath Colour International Grey	305m Box	SFU6-H0423-IG	Category 6 SF/UTP Cables, 4Pairs, 23AWG Solid Copper, LSZH Sheath Colour International Grey	305m Box
SFU6-C0423-BU	Category 6 SF/UTP Cables, 4Pairs, 23AWG Solid Copper, PVC Sheath Colour Blue	305m Box	SFU6-H0423-BU	Category 6 SF/UTP Cables, 4Pairs, 23AWG Solid Copper, LSZH Sheath Colour Blue	305m Box
SFU6-C0423-OR	Category 6 SF/UTP Cables, 4Pairs, 23AWG Solid Copper, PVC Sheath Colour Orange	305m Box	SFU6-H0423-OR	Category 6 SF/UTP Cables, 4Pairs, 23AWG Solid Copper, LSZH Sheath Colour Orange	305m Box
SFU6-C0423-WH	Category 6 SF/UTP Cables, 4Pairs, 23AWG Solid Copper, PVC Sheath Colour White	305m Box	SFU6-H0423-WH	Category 6 SF/UTP Cables, 4Pairs, 23AWG Solid Copper, LSZH Sheath Colour White	305m Box
SFU6-C0423-RD	Category 5e SF/UTP Cables, 4Pairs, 23AWG Solid Copper, PVC Sheath Colour Red	305m Box	SFU6-H0423-RD	Category 6 SF/UTP Cables, 4Pairs, 23AWG Solid Copper, LSZH Sheath Colour Red	305m Box
SFU6-C0423-GR	Category 6 SF/UTP Cables, 4Pairs, 23AWG Solid Copper, PVC Sheath Colour Green	305m Box	SFU6-H0423-GR	Category 6 SF/UTP Cables, 4Pairs, 23AWG Solid Copper, LSZH Sheath Colour Green	305m Box
SFU6-C0423-YL	Category 6 SF/UTP Cables, 4Pairs, 23AWG Solid Copper, PVC Sheath Colour Yellow	305m Box	SFU6-H0423-YL	Category 6 SF/UTP Cables, 4Pairs, 23AWG Solid Copper, LSZH Sheath Colour Yellow	305m Box
SFU6-C0423-VL	Category 6 SF/UTP Cables, 4Pairs, 23AWG Solid Copper, PVC Sheath Colour Violet	305m Box	SFU6-H0423-VL	Category 6 SF/UTP Cables, 4Pairs, 23AWG Solid Copper, LSZH Sheath Colour Violet	305m Box

PATCH PANELS

CATEGORY 6

OSILAN's Category 6 Patch Panels comply with the current standards for enhanced Category 6/ Class E.

All outlets are numerically identified with an additional writable surface for ease of port naming. Each panel has integrated rear cable management to make the installation easier. A choice of port density of 24-Port 1U, 48-Port 2U are available to suit all applications.

Each panel is supplied with cable ties, panel mounting accessories and short form installation instructions.



FEATURES AND BENEFITS

- Category 6 compliant to ISO IEC11801 & amendments, EN50173-1, ANSI/EIA/TIA 568C Series
- Available in two Versions.
 - Modular Patch Panel: Accept OSILAN Modules for UTP, STP, fiber optic, and audiovideo, which snap in and out for easy movement, additions or changes (Modular Patch Panel).
 - Category 6 compliant Patch Panel using patented state of the art printed circuit technology.
- Category 6 compliant Patch Panel available in two types
 - Cold-Rolled Steel (CRS) : Used for Screened cables
 - High impact, flame retardant plastic for unshielded cables.
- Pre-printed numbers above each port for easy identification
- Mount to standard EIA racks with optional extender bracket.
- Angled patch panels facilitate proper bend radius control and minimize the need for horizontal cable managers.
- Power Sum Compliant
- Supports Gigabit Ethernet
- **Wiring Specification:** T568A & T568B
- **Connecting Tools:** 110 Punch tools, Krone Type termination tools
- **Operating temperature:** -10°C to 60°C
- **Storage temperature:** -40°C to 70°C
- **Relative humidity:** Max. non-condensing 93%



CATEGORY 6 PATCH PANEL

SCREENED

PART NO.	DESCRIPTION
PPI-S6-24P-1U-BL	Category 6 Screened Patch Panel 24 Port 1U Black

CATEGORY 6 PATCH PANEL

UNSCREENED

PART NO.	DESCRIPTION
PPI-U6-24P-1U-BL	Category 6 Unscreened Patch Panel 24 Port 1U Black
PPI-U6-48P-2U-BL	Category 6 Unscreened Patch Panel 48 Port 2U Black
PPI-U6-24P-1U-BU	Category 6 Unscreened Patch Panel 24 Port 1U Blue
PPI-U6-48P-2U-BU	Category 6 Unscreened Patch Panel 48 Port 2U Blue
PPI-U6-24P-1U-GR	Category 6 Unscreened Patch Panel 24 Port 1U Green
PPI-U6-48P-2U-GR	Category 6 Unscreened Patch Panel 48 Port 2U Green
PPI-U6-24P-1U-RD	Category 6 Unscreened Patch Panel 24 Port 1U Red
PPI-U6-48P-2U-RD	Category 6 Unscreened Patch Panel 48 Port 2U Red

MODULAR PATCH PANEL

PART NO.	DESCRIPTION
PPM-24P-1U-BL	24 Port Modular Patch Panel Empty, 1U Sizes, 19", Accepts 24 Jack Modules, Black
PPM-48P-2U-BL	48 Port Modular Patch Panel Empty, 2U Sizes, 19", Accepts 48 Jack Modules, Black
PPMA-24P-1U-BL	24 Port Modular Patch Panel Empty, 1U Sizes, 19", Accepts 24 Jack Modules, Black
PPMA-48P-2U-BL	48 Port Modular Patch Panel Empty, 2U Sizes, 19", Accepts 48 Jack Modules, Black



JACK MODULES

CATEGORY 6

OSILAN's Category 6 Screened and UnScreened Snap-in-Jacks offer true Category 6/Class E component performance.

The Jacks are suitable for mounting in range of housings from patch panels, faceplates, floor boxes, and work areas distribution enclosures.

- **Category 6 Unscreened Keystone**
Tool-less Jack
- **Category 6 Unscreened Keystone**
Tool-less Jack - Butterfly Style
- **Category 6 Unscreened Keystone**
Punch Down
- **Category 6 Unscreened Keystone**
Punch Down With Shutter
- **Category 6 Screened Keystone**
Tool-less Jack - Butterfly Style



FEATURES AND BENEFITS

- **ISO/IEC category:**
Category 6 performance connectors ANSI/TIA-968-A. IEC 60603-7. EIA/TIA 568-C.2 series:
Category 6/Class E performance from 1 to 350 MHz.
- Terminates full range of 22 – 26 AWG conductors
- **Operating Temperature:**
-10°C to 60°C
- **Storage Temperature:**
-40°C to 70°C
- Each jack is 100% tested to ensure NEXT and RL performance and is individually serialized for traceability
- **Connector Body:**
High-impact, fire-retardant plastic rated UL 94V-0
- Contacts plated with 50 micro inches of gold
- Accept 6 and 8 -position modular plugs without damage
- **Number of IDC Termination:**
Minimum 200 re terminations
- **Wiring Code:**
T568A and T568B wiring schemes
- Spring shuttered jack module has a spring shuttered door that opens and closes automatically with plug insertion or removal to prevent dust or debris from accumulating on contacts.
- Termination style can be done without tools (Tool-less type) or with 110 Compatible tools
- Multiple colours available

UNSCREENED KEYSTONE JACK WITH SHUTTER

PART NO.	DESCRIPTION
JMU6180S-WH	Category 6 Unscreened Keystone Jack with Shutter White
JMU6180S-BL	Category 6 Unscreened Keystone Jack with Shutter Black
JMU6180S-GR	Category 6 Unscreened Keystone Jack with Shutter Green
JMU6180S-BU	Category 6 Unscreened Keystone Jack with Shutter Blue

UNSCREENED KEYSTONE JACK

PART NO.	DESCRIPTION
JMU6901-WH	Category 6 Unscreened Keystone Jack White
JMU6901-BL	Category 6 Unscreened Keystone Jack Black
JMU6901-GR	Category 6 Unscreened Keystone Jack Green
JMU6901-BU	Category 6 Unscreened Keystone Jack Blue

UNSCREENED KEYSTONE JACK, TOOL-LESS VERSION- BUTTERFLY STYLE

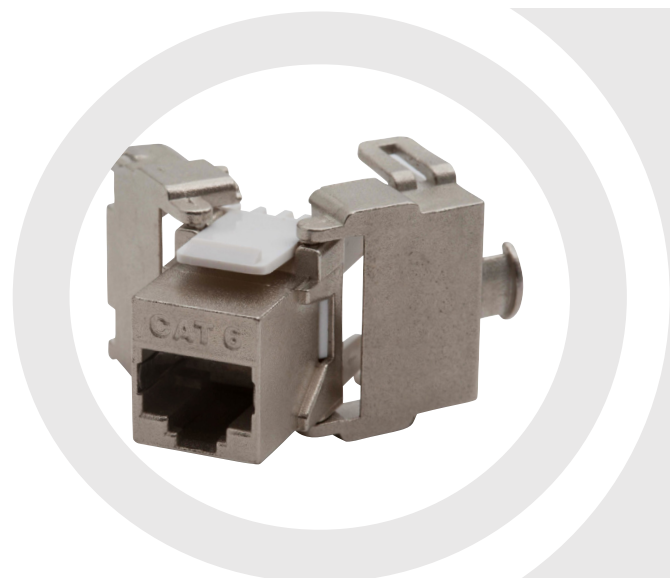
PART NO.	DESCRIPTION
JMU61801-WH	Category 6 Unscreened butterfly style Tool-less Keystone Jack White
JMU61801-BL	Category 6 Unscreened butterfly style Tool-less Keystone Jack Black
JMU61801-GR	Category 6 Unscreened butterfly style Tool-less Keystone Jack Green
JMU61801-BU	Category 6 Unscreened butterfly style Tool-less Keystone Jack Blue

UNSCREENED KEYSTONE JACK TOOL-LESS VERSION

PART NO.	DESCRIPTION
JMU61802-WH	Category 6 Unscreened Tool-less Keystone Jack White
JMU61802-BK	Category 6 Unscreened Tool-less Keystone Jack Black
JMU61802-GR	Category 6 Unscreened Tool-less Keystone Jack Green
JMU61802-BU	Category 6 Unscreened Tool-less Keystone Jack Blue

SCREENED KEYSTONE JACK, TOOL-LESS VERSION, BUTTERFLY STYLE

PART NO.	DESCRIPTION
JMS61801-SV	Category 6 Screened butterfly Style, Tool-less Keystone Jack Silver



PATCH CORDS

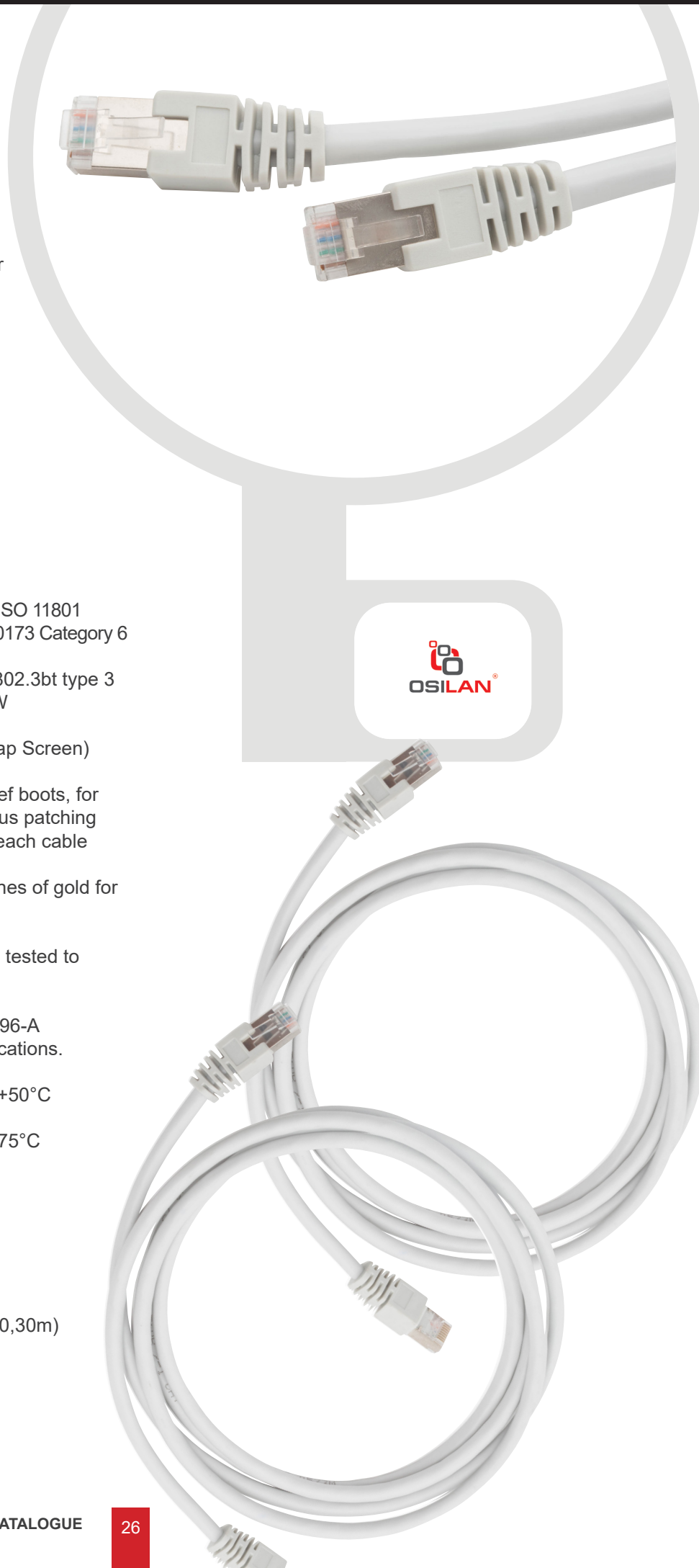
CATEGORY 6

OSILAN's Cat6 Screened and UnScreened Patch cords are manufactured and tested individually to comply with ISO11801, EN 50173 Category 6 and EIA/TIA standards for enhanced performance.

Each cable consists of 4 pairs stranded conductors twisted together with varying lay lengths. Multiple colours are available for outer jacket sheath to enhance application identifications where necessary.

FEATURES AND BENEFITS

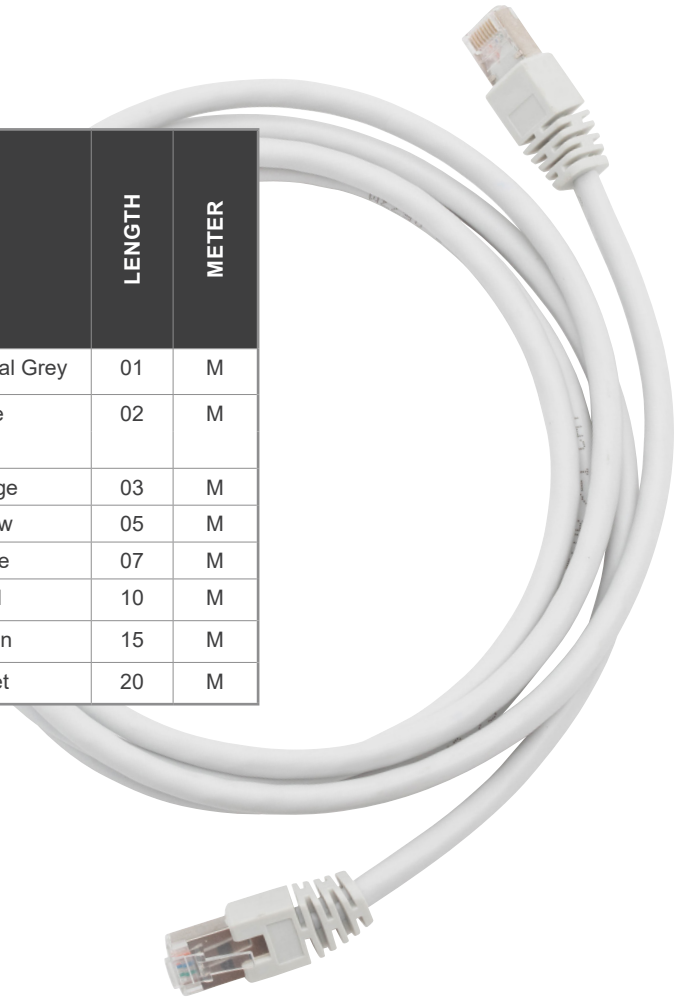
- Exceeds ANSI/TIA-568-C.2 Category 6, ISO 11801 Category 6/Class E standards and EN 50173 Category 6
- Supports IEEE 802.3af, 802.3at, and 802.3bt type 3 and 4 for PoE applications up to 100 W
- Available in UTP and F/UTP (AL Foil tap Screen)
- Cables are fitted with plastic strain relief boots, for applications that may require continuous patching or a degree of stress relief applied to each cable
- Plug contacts plated with 50 micro inches of gold for superior performance
- Each patch cord is 100% performance tested to component limits and wired to T568B.
- Plug meets all applicable ANSI/TIA-1096-A requirements and IEC 60603-7 specifications.
- **Temperature (Installation):** -30°C to +50°C
- **Temperature (Operation):** -20°C to +75°C
- LSZH IEC 60332-1 Sheath
- Supports Gigabit Ethernet
- Multiple colours available
- Variable lengths (0.5,1,2,3,5,7,10,15,20,30m)



CATEGORY 6

PATCH CORDS PART NO. GENERATOR

PATCH CORD	CONSTRUCTION		CATEGORY	TYPE OF JACKET	PAIRS/AWG	JACKET COLOURS		LENGTH	METER
PC	U/U	U/UTP	6	H	0424	IG	International Grey	01	M
PC	U/U	U/UTP	6	C	0424	BU	Blue	02	M
PC	U/U	U/UTP	6	H	0423				
PC	U/U	U/UTP	6	C	0423	OR	Orange	03	M
PC	F/U	F/UTP	6	H	0424	YL	Yellow	05	M
PC	F/U	F/UTP	6	H	0426	WH	White	07	M
PC-U6-H0424-IG-03M: Category 6 U/UTP Patch Cords, LSZH Sheath, 3m, International Gray						RD	Red	10	M
						GR	Green	15	M
						VL	Violet	20	M



CATEGORY 6 U/UTP PATCH CORDS

24 AWG STRANDED, LSZH

PART NO.	DESCRIPTION
PC-U/U/U6-H0424-WH-01M	Category 6 U/UTP Patch Cords, LSZH Sheath, 3m, International White
PC-U/U/U6-H0424-GR-01M	Category 6 U/UTP Patch Cords, LSZH Sheath, 3m, Green
PC-U/U/U6-H0424-BU-01M	Category 6 U/UTP Patch Cords, LSZH Sheath, 3m, Blue
PC-U/U/U6-H0424-OR-01M	Category 6 U/UTP Patch Cords, LSZH Sheath, 3m, Orange
PC-U/U/U6-H0424-BL-01M	Category 6 U/UTP Patch Cords, LSZH Sheath, 3m, Black
PC-U/U/U6-H0424-YL-01M	Category 6 U/UTP Patch Cords, LSZH Sheath, 3m, Yellow
PC-U/U/U6-H0424-VL-03M	Category 6 U/UTP Patch Cords, LSZH Sheath, 3m, Violet

CATEGORY 6 F/UTP PATCH CORDS

24 AWG STRANDED, LSZH

PART NO.	DESCRIPTION
PC-F/U6-H0424-WH-01M	Category 6 F/UTP Patch Cords, LSZH Sheath, 3m, International White
PC-F/U6-H0424-GR-01M	Category 6 F/UTP Patch Cords, LSZH Sheath, 3m, Green
PC-F/U6-H0424-BU-01M	Category 6 F/UTP Patch Cords, LSZH Sheath, 3m, Blue
PC-F/U6-H0424-OR-01M	Category 6 F/UTP Patch Cords, LSZH Sheath, 3m, Orange
PC-F/U6-H0424-BL-01M	Category 6 F/UTP Patch Cords, LSZH Sheath, 3m, Black
PC-F/U6-H0424-YL-01M	Category 6 F/UTP Patch Cords, LSZH Sheath, 3m, Yellow
PC-F/U6-H0424-VL-01M	Category 6 F/UTP Patch Cords, LSZH Sheath, 3m, Violet

CATEGORY 6 PATCH CORDS





CATEGORY 6A



CATEGORY 6A

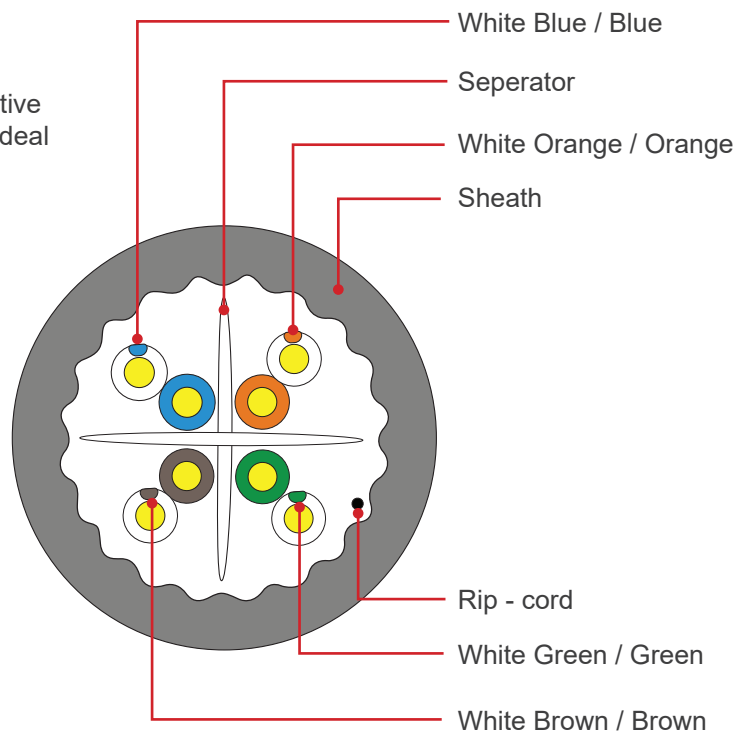
U/UTP COPPER CABLE

OSILAN's Category 6A cables are a flexible and cost effective solution that fully complies with category 6A/Class EA and ideal for use in LAN protocols and applications such as.

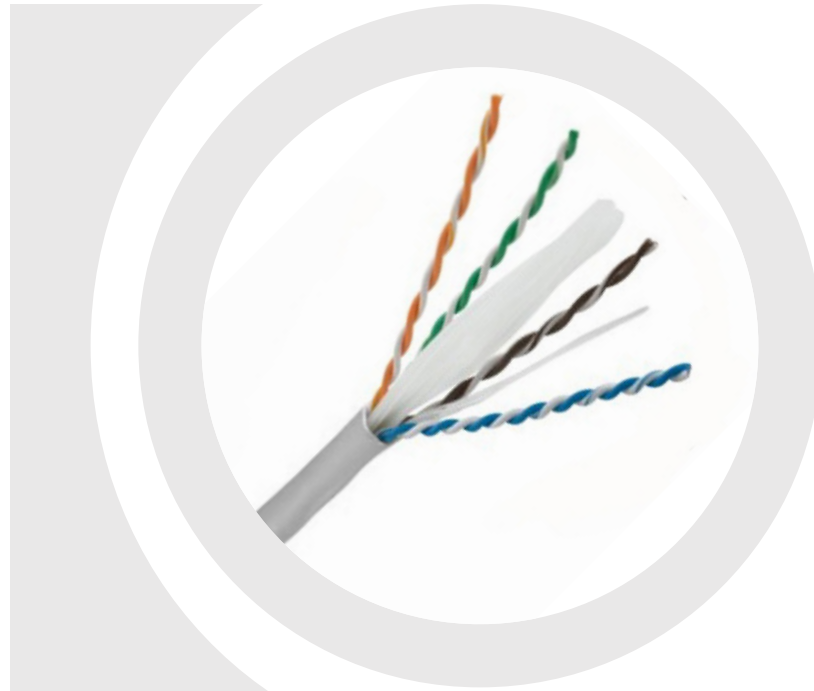
- 10BASE-T (Ethernet), 100BASE-T (Fast Ethernet), 1000BASE-T (Gigabit Ethernet), and 10G
- 155 Mb/s ATM, 622 Mb/s ATM, 1.2 Gb/s ATM, Token Ring 4/16 and ISDN
- POE, Voice, Broadband videos transmission at frequencies up to 500 MHz.

FEATURES AND BENEFITS

- **Standard Compliance:** ANSI/TIA-568-C.2 Category 6A, ISO 11801 2nd Edition Class EA channels standards, IEEE 802.3an-2006 and EN 50173: 2007 EN 50288-3-1:2013.
- Exceeds requirements of ANSI/TIA-568-C.2 Category 6A and IEC 61156-5 Category 6A component standards
- Supports IEEE 802.3af, 802.3at, and 802.3bt type 3 and 4 for PoE applications up to 100 W
- Osilan's Category 6A cable provides end to end solution in both screened and unscreened designs.
- The performance headroom provided by Osilan's Category 6A cable makes it a reliable and safe choice of cabling to support 10 Gigabit Ethernet
- **Insulation:** Skin-foam-skin PE
- **Installation temperature range:** -30°C to 50°C
- **Temperature (Operation):** -10°C to +60°C
- Channel characterized to 500 MHz
- Descending length cable markings enable easy identification of remaining cable which reduces installation time and cable waste.
- 25 Years System Warranty.



CATEGORY 6A



CATEGORY 6A

OSILAN CATEGORY 6A U/UTP PVC

OSILAN CATEGORY 6A U/FTP LSZH

PART NO.	DESCRIPTION	PACKING	PART NO.	DESCRIPTION	PACKING
U6A-C0423-IG	Category 6A U/UTP Cables, 4Pairs, 23AWG Solid Copper, PVC Sheath Colour International Grey	500m Box	UF6A-H0423-IG	Category 6A U/FTP Cables, 4Pairs, 23AWG Solid Copper, LSZH Sheath Colour International Grey	500m Box
U6A-C0423-BU	Category 6A U/UTP Cables, 4Pairs, 23AWG Solid Copper, PVC Sheath Colour Blue	500m Box	UF6A-H0423-BU	Category 6A U/FTP Cables, 4Pairs, 23AWG Solid Copper, LSZH Sheath Colour Blue	500m Box
U6A-C0423-OR	Category 6A U/UTP Cables, 4Pairs, 23AWG Solid Copper, PVC Sheath Colour Orange	500m Box	UF6A-H0423-OR	Category 6A U/FTP Cables, 4Pairs, 23AWG Solid Copper, LSZH Sheath Colour Orange	500m Box
U6A-C0423-WH	Category 6A U/UTP Cables, 4Pairs, 23AWG Solid Copper, PVC Sheath Colour White	500m Box	UF6A-H0423-WH	Category 6A U/FTP Cables, 4Pairs, 23AWG Solid Copper, LSZH Sheath Colour White	500m Box
U6A-C0423-RD	Category 6A U/UTP Cables, 4Pairs, 23AWG Solid Copper, PVC Sheath Colour Red	500m Box	UF6A-H0423-RD	Category 6A U/FTP Cables, 4Pairs, 23AWG Solid Copper, LSZH Sheath Colour Red	500m Box
U6A-C0423-GR	Category 6A U/UTP Cables, 4Pairs, 23AWG Solid Copper, PVC Sheath Colour Green	500m Box	UF6A-H0423-GR	Category 6A U/FTP Cables, 4Pairs, 23AWG Solid Copper, LSZH Sheath Colour Green	500m Box
U6A-C0423-YL	Category 6A U/UTP Cables, 4Pairs, 23AWG Solid Copper, PVC Sheath Colour Yellow	500m Box	UF6A-H0423-YL	Category 6A U/FTP Cables, 4Pairs, 23AWG Solid Copper, LSZH Sheath Colour Yellow	500m Box
U6A-C0423-VL	Category 6A U/UTP Cables, 4Pairs, 23AWG Solid Copper, PVC Sheath Colour Violet	500m Box	UF6A-H0423-VL	Category 6A U/FTP Cables, 4Pairs, 24AWG Solid Copper, LSZH Sheath Colour Violet	500m Box

CATEGORY 6A

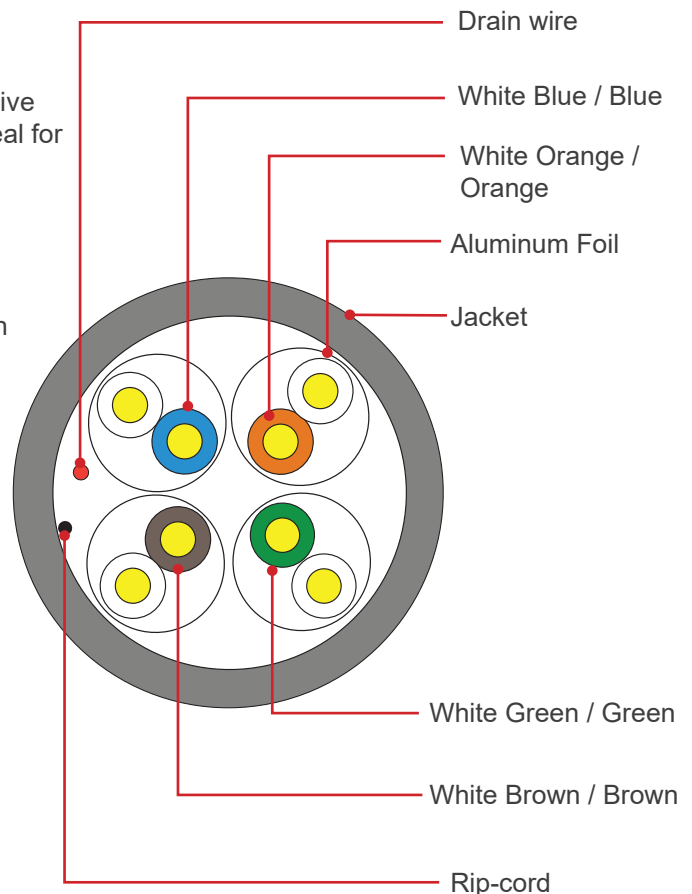
U/FTP COPPER CABLE

OSILAN's Category 6A cables are a flexible and cost effective solution that fully complies with category 6A/Class EA and ideal for use in LAN protocols and applications such as.

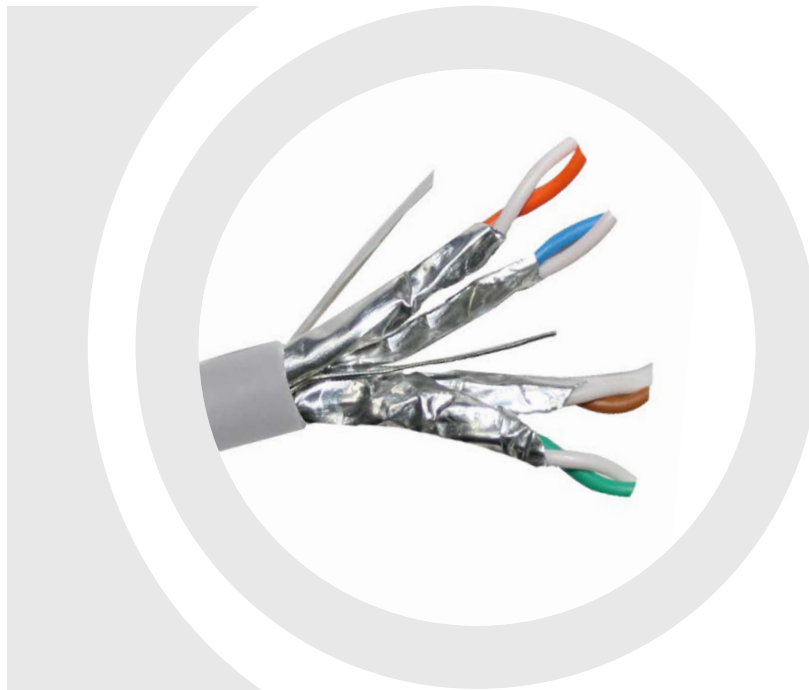
- 10BASE-T (Ethernet), 100BASE-T (Fast Ethernet), 1000BASE-T (Gigabit Ethernet) and 10G
- 155 Mb/s ATM, 622 Mb/s ATM, 1.2 Gb/s ATM, Token Ring 4/16 and ISDN
- POE, Voice, Broadband videos transmission at frequencies up to 500 MHz.

FEATURES AND BENEFITS

- **Standard Compliance:** ANSI/TIA-568-C.2 Category 6A, ISO 11801 2nd Edition Class EA channels standards, IEEE 802.3an-2006 and EN 50173:2007 EN 50288-3-1:2013.
- Exceeds requirements of ANSI/TIA-568-C.2 Category 6A and IEC 61156-5 Category 6A component standards.
- Supports IEEE 802.3af, 802.3at, and 802.3bt type 3 and 4 for PoE applications up to 100W
- Osilan's Category 6A cable provides end to end solutions in both screened and unscreened designs.
- The performance headroom provided by Osilan's Category 6A Solution makes it a reliable and safe choice of cabling to support 10 Gigabit Ethernet.
- **Screen:** Aluminum Foil
- **Drain Wire:** 0.45mm Tinned Copper (TC) Available in Screened Cables
- **Installation temperature range:** -30°C to 50°C
- **Temperature (Operation):** -10°C to +60°C
- Channel characterized to 500 MHz
- Descending length cable markings enable easy identification of remaining cable which reduces installation time and cable waste.
- 25 Years System Warranty.



CATEGORY 6A



CATEGORY 6A

OSILAN CATEGORY 6A U/FTP PVC

PART NO.	DESCRIPTION	PACKING
UF6A-C0423-IG	Category 6A U/FTP Cables, 4Pairs, 23AWG Solid Copper, PVC Sheath Colour International Grey	500m Box
UF6A-C0423-BU	Category 6A U/FTP Cables, 4Pairs, 23AWG Solid Copper, PVC Sheath Colour Blue	500m Box
UF6A-C0423-OR	Category 6A U/FTP Cables, 4Pairs, 23AWG Solid Copper, PVC Sheath Colour Orange	500m Box
UF6A-C0423-WH	Category 6A U/FTP Cables, 4Pairs, 23AWG Solid Copper, PVC Sheath Colour White	500m Box
UF6A-C0423-RD	Category 6A U/FTP Cables, 4Pairs, 23AWG Solid Copper, PVC Sheath Colour Red	500m Box
UF6A-C0423-GR	Category 6A U/FTP Cables, 4Pairs, 23AWG Solid Copper, PVC Sheath Colour Green	500m Box
UF6A-C0423-YL	Category 6A U/FTP Cables, 4Pairs, 23AWG Solid Copper, PVC Sheath Colour Yellow	500m Box
UF6A-C0423-VL	Category 6A U/FTP Cables, 4Pairs, 23AWG Solid Copper, PVC Sheath Colour Violet	500m Box

OSILAN CATEGORY 6A U/FTP LSZH

PART NO.	DESCRIPTION	PACKING
UF6A-H0423-IG	Category 6A U/FTP Cables, 4Pairs, 23AWG Solid Copper, LSZH Sheath Colour International Grey	500m Box
UF6A-H0423-BU	Category 6A U/FTP Cables, 4Pairs, 23AWG Solid Copper, LSZH Sheath Colour Blue	500m Box
UF6A-H0423-OR	Category 6A U/FTP Cables, 4Pairs, 23AWG Solid Copper, LSZH Sheath Colour Orange	500m Box
UF6A-H0423-WH	Category 6A U/FTP Cables, 4Pairs, 23AWG Solid Copper, LSZH Sheath Colour White	500m Box
UF6A-H0423-RD	Category 6A U/FTP Cables, 4Pairs, 23AWG Solid Copper, LSZH Sheath Colour Red	500m Box
UF6A-H0423-GR	Category 6A U/FTP Cables, 4Pairs, 23AWG Solid Copper, LSZH Sheath Colour Green	500m Box
UF6A-H0423-YL	Category 6A U/FTP Cables, 4Pairs, 23AWG Solid Copper, LSZH Sheath Colour Yellow	500m Box
UF6A-H0423-VL	Category 6A U/FTP Cables, 4Pairs, 23AWG Solid Copper, LSZH Sheath Colour Violet	500m Box

CATEGORY 6A

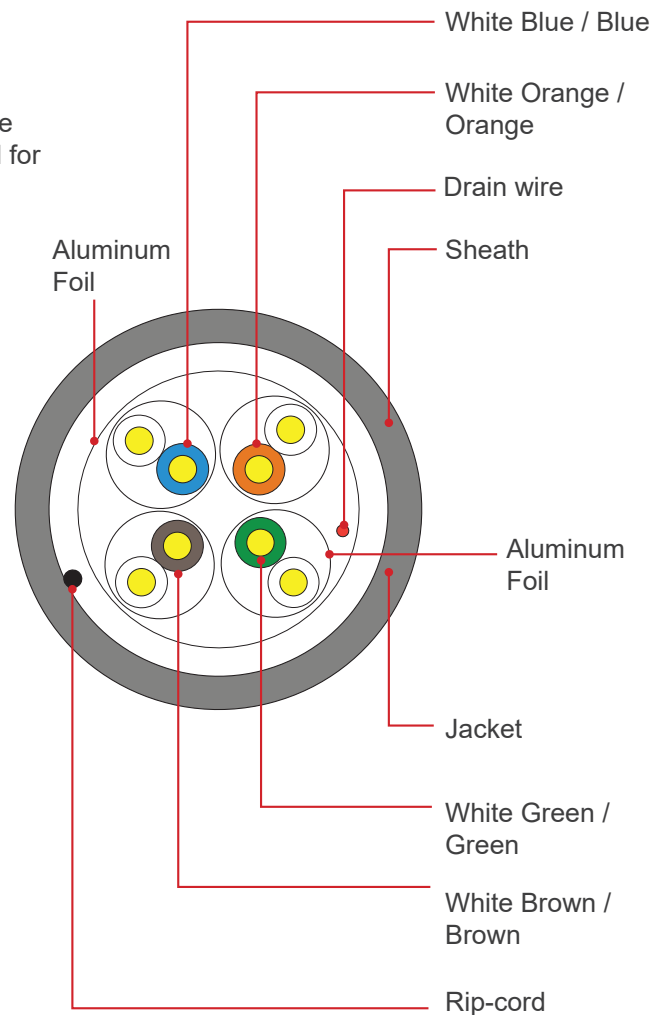
F/FTP COPPER CABLE

OSILAN's Category 6A cables are a flexible and cost effective solution that fully complies with category 6A/Class EA and ideal for use in LAN protocols and applications such as.

- 10BASE-T (Ethernet), 100BASE-T (Fast Ethernet), 1000BASE-T (Gigabit Ethernet), and 10G
- 155 Mb/s ATM, 622 Mb/s ATM, 1.2 Gb/s ATM, Token Ring 4/16 and ISDN
- POE, Voice, Broadband videos transmission at frequencies up to 500 MHz.

FEATURES AND BENEFITS

- **Standard Compliance:** ANSI/TIA-568-C.2 Category 6A, ISO 11801 2nd Edition Class EA channels standards, IEEE 802.3an-2006 and EN 50173:2007 EN 50288-3-1:2013.
- Exceeds requirements of ANSI/TIA-568-C.2 Category 6A and IEC 61156-5 Category 6A component standards.
- Supports IEEE 802.3af, 802.3at, and 802.3bt type 3 and 4 for PoE applications up to 100 W.
- The performance headroom provided by OSILAN Category 6A Solution makes it a reliable and safe choice of cabling to support 10 Gigabit Ethernet.
- **Insulation:** Skin-foam-skin PE
- **Screen:** Aluminium Foil
- **Drain Wire:** 0.45mm Tinned Copper (TC) Available in Screened Cables
- **Installation temperature range:** -30°C to 50°C
- **Temperature (Operation):** -10°C to +60°C
- Channel characterized to 500 MHz
- Descending length cable markings enable easy identification of remaining cable which reduces installation time and cable waste.
- 25 Years System Warranty



CATEGORY 6A



CATEGORY 6A

OSILAN CATEGORY 6A F/FTP PVC

OSILAN CATEGORY 6A F/FTP LSZH

PART NO.	DESCRIPTION	PACKING	PART NO.	DESCRIPTION	PACKING
FF6A-C0423-IG	Category 6A F/FTP Cables, 4Pairs, 24AWG Solid Copper, PVC Sheath Colour International Grey	500m Box	FF6A-H0423-IG	Category 6A F/FTP Cables, 4Pairs, 23AWG Solid Copper, LSZH Sheath Colour International Grey	500m Box
FF6A-C0423-BU	Category 6A F/FTP Cables, 4Pairs, 23AWG Solid Copper, PVC Sheath Colour Blue	500m Box	FF6A-H0423-BU	Category 6A F/FTP Cables, 4Pairs, 23AWG Solid Copper, LSZH Sheath Colour Blue	500m Box
FF6A-C0423-OR	Category 6A F/FTP Cables, 4Pairs, 23AWG Solid Copper, PVC Sheath Colour Orange	500m Box	FF6A-H0423-OR	Category 6A F/FTP Cables, 4Pairs, 23AWG Solid Copper, LSZH Sheath Colour Orange	500m Box
FF6A-C0423-WH	Category 6A F/FTP Cables, 4Pairs, 23AWG Solid Copper, PVC Sheath Colour White	500m Box	FF6A-H0423-WH	Category 6A F/FTP Cables, 4Pairs, 23AWG Solid Copper, LSZH Sheath Colour White	500m Box
FF6A-C0423-RD	Category 6A F/FTP Cables, 4Pairs, 23AWG Solid Copper, PVC Sheath Colour Red	500m Box	FF6A-H0423-RD	Category 6A F/FTP Cables, 4Pairs, 23AWG Solid Copper, LSZH Sheath Colour Red	500m Box
FF6A-C0423-GR	Category 6A F/FTP Cables, 4Pairs, 23AWG Solid Copper, PVC Sheath Colour Green	500m Box	FF6A-H0423-GR	Category 6A F/FTP Cables, 4Pairs, 23AWG Solid Copper, LSZH Sheath Colour Green	500m Box
FF6A-C0423-YL	Category 6A F/FTP Cables, 4Pairs, 23AWG Solid Copper, PVC Sheath Colour Yellow	500m Box	FF6A-H0423-YL	Category 6A F/FTP Cables, 4Pairs, 23AWG Solid Copper, LSZH Sheath Colour Yellow	500m Box
FF6A-C0423-VL	Category 6A F/FTP Cables, 4Pairs, 23AWG Solid Copper, PVC Sheath Colour Violet	500m Box	FF6A-H0423-VL	Category 6A F/FTP Cables, 4Pairs, 23AWG Solid Copper, LSZH Sheath Colour Violet	500m Box

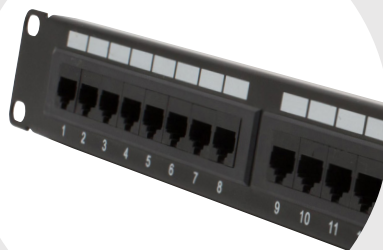
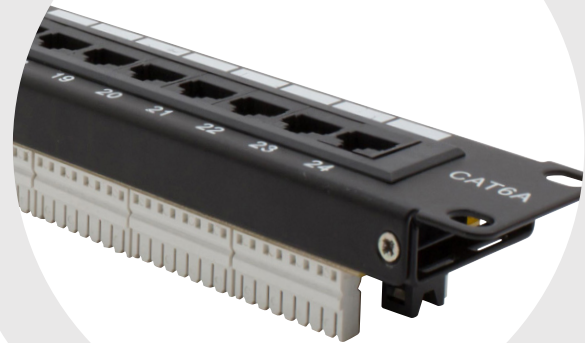
CATEGORY 6A

PATCH PANELS

OSILAN's Category 6A Patch Panels comply with the current standards for enhanced Category 6A/ Class EA.

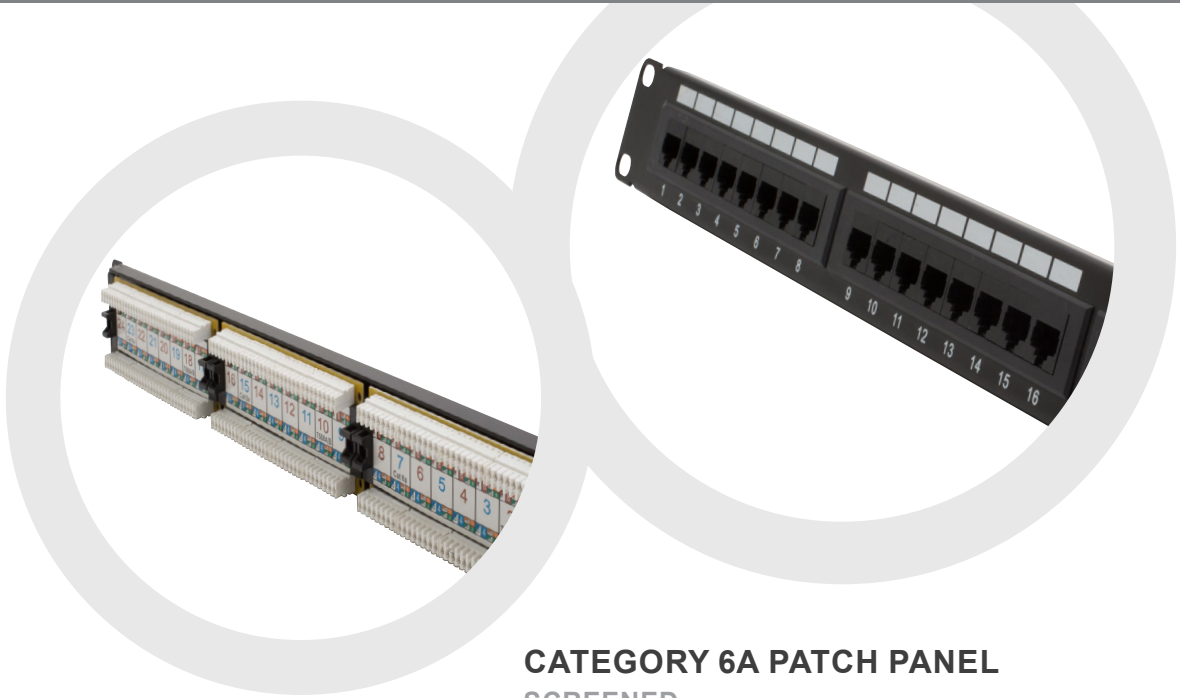
All outlets are numerically identified with an additional writable surface for ease of port naming. Each panel has integrated rear cable management to make the installation easier. A choice of port density 24-Port 1U, 48-Port 2U is available to suit all applications.

Each panel is supplied with cable ties, panel mounting accessories and short form installation instructions.



FEATURES AND BENEFITS

- Exceeds requirements of ANSI/TIA-568-C.2 Category 6A, IEEE 802.3an-2006, and ISO 11801 Class EA channel standards.
- Exceeds requirements of ANSI/TIA-568-C.2 Category 6A and IEC 60603-7-41 Category 6A component standards
- Supports IEEE 802.3af, 802.3at, and IEEE 802.3bt type 3 and 4 for PoE applications up to 100 W.
- Each port is 100% tested to ensure NEXT and RL performance.
- Contacts plated with 50 micro inches of gold for superior performance
- Angled versions allow for higher density applications by easily routing the patch cords to each side of the panel eliminating the need for horizontal cable management
- Pre-printed numbers above each port for easy identification
- Mount to standard EIA racks with optional extender bracket.
- **Wiring Specification:** T568A & T568B
- Connecting Tools : 110 Punch tools , Krone Type termination tools
- **Operating temperature:** -10°C to 60°C
- **Storage temperature:** -40°C to 70°C
- **Relative humidity:** Max. Non-condensing 93%.
- Empty Panel is available in flush mount and Angled Style with 24 ports, 48 ports.
- OSILAN Patch Panel Housing is available in two types
- Cold-Rolled Steel (CRS) : Used for Screened cables
- High impact, flame retardant plastic for unshielded cables.
- Earthing kit, cage nuts and mini cable ties included



**CATEGORY 6A PATCH PANEL
SCREENED**

PART NO.	DESCRIPTION
PPI-S6A-24P-1U-BK	Category 6A Screened Patch Panel 24 Port 1U Black

**CATEGORY 6A PATCH PANEL
UNSCREENED**

PART NO.	DESCRIPTION
PPI-U6A-24P-1U-BL	Category 6A Unscreened Patch Panel 24 Port 1U Black
PPI-U6A-48P-2U-BL	Category 6A Unscreened Patch Panel 48 Port 2U Black
PPI-U6A-24P-1U-BU	Category 6A Unscreened Patch Panel 24 Port 1U Blue
PPI-U6A-48P-2U-BU	Category 6A Unscreened Patch Panel 48 Port 2U Blue
PPI-U6A-24P-1U-GR	Category 6A Unscreened Patch Panel 24 Port 1U Green
PPI-U6A-48P-2U-GR	Category 6A Unscreened Patch Panel 48 Port 2U Green
PPI-U6A-24P-1U-RD	Category 6A Unscreened Patch Panel 24 Port 1U Red
PPI-U6A-48P-2U-RD	Category 6A Unscreened Patch Panel 48 Port 2U Red

MODULAR PATCH PANEL

PART NO.	DESCRIPTION
PPM-24P-1U-BL	24 Port Modular Patch Panel Empty, 1U Sizes, 19", Accepts 24 Jack Modules, Black
PPM-48P-2U-BL	48 Port Modular Patch Panel Empty, 2U Sizes, 19", Accepts 48 Jack Modules, Black
PPMA-24P-1U-BL	24 Port Modular Patch Panel Empty, 1U Sizes, 19", Accept 24 Jack Modules, Black
PPMA-48P-2U-BL	48 Port Modular Patch Panel Empty, 2U Sizes, 19", Accept 48 Jack Modules, Black



CATEGORY 6A

JACK MODULES

OSILAN's Category 6A Screened and Unscreened Snap-in-Jacks offer true Category 6A/Class EA component performance.

The Jacks are suitable for mounting in range of housings from patch panels, faceplates, floor boxes, and work areas distribution enclosures.

- **Category 6A Unscreened Keystone**
Tool-less Jack.
- **Category 6A Unscreened Keystone**
Tool-less Jack – Butterfly Style.
- **Category 6A Unscreened Keystone**
Punch Down
- **Category 6A Unscreened Keystone**
Punch Down With Shutter
- **Category 6A Screened Keystone**
Tool-less Jack – Butterfly Style.



FEATURES AND BENEFITS

- Exceeds ANSI/TIA-568-C.2 Category 6A, IEC 60603-7-41 component standards from 1 to 500 MH and EN 50173-1:2011 EN 50173-2:2007.
- Supports IEEE 802.3af, 802.3at, and IEEE 802.3bt type 3 and 4 for PoE applications up to 100 W
- EC Verified
- Suitable for 10 Gigabit and 10GBase-T Ethernet application
- Terminates full range of 22 – 26 AWG conductors
- **Operating Temperature:**
-10°C to 60°C
- **Storage Temperature:**
-40°C to 70°C.
- Each jack is 100% tested to ensure NEXT and RL performance and is individually serialized for traceability.
- **Connector Body:** High-impact, fire-retardant plastic rated UL 94V-0.
- Contacts plated with 50 micro inches of gold.
- Accept 6 and 8-position modular plugs without damage.
- **Number of IDC Termination:**
Minimum 200 re terminations.
- **Wiring Code:**
T568A and T568B wiring schemes.
- Accept 6 and 8-position modular plugs without damage
- Spring shuttered jack module has a spring shuttered door that opens and closes automatically with plug insertion or removal to prevent dust or debris from accumulating on contacts.
- Termination style can be done without tools (Tool-less type) or with 110 Compatible tools.
- Multiple colours available.
- Suitable for patch panel and faceplate mounting
- Shielded Jack Modules have the following specifications.

Integrated strain relief with wire cap provides 360 ° conductive paths for grounding.

Fully grounded and bonded to patch panel when installed in OSILAN Metal Modular Patch Panel

UNSCREENED KEYSTONE JACK WITH SHUTTER

PART NO.	DESCRIPTION
JMU6A180S-WH	Category 6A Unscreened Keystone Jack with Shutter White
JMU6A180S-BL	Category 6A Unscreened Keystone Jack with Shutter Black
JMU6A180S-GR	Category 6A Unscreened Keystone Jack with Shutter Green
JMU6A180S-BU	Category 6A Unscreened Keystone Jack with Shutter Blue

UNSCREENED KEYSTONE JACK

PART NO.	DESCRIPTION
JMU6A901-WH	Category 6A Unscreened Keystone Jack White
JMU6A901-BL	Category 6A Unscreened Keystone Jack Black
JMU6A901-GR	Category 6A Unscreened Keystone Jack Green
JMU6A901-BU	Category 6A Unscreened Keystone Jack Blue

**UNSCREENED KEYSTONE JACK,
TOOL-LESS
VERSION- BUTTERFLY STYLE**

PART NO.	DESCRIPTION
JMU6A1801-WH	Category 6A Unscreened butterfly style Tool-less Keystone Jack White
JMU6A1801-BL	Category 6A Unscreened butterfly style Tool-less Keystone Jack Black
JMU6A1801-GR	Category 6A Unscreened butterfly style Tool-less Keystone Jack Green
JMU6A1801-BU	Category 6A Unscreened butterfly style Tool-less Keystone Jack Blue

**UNSCREENED KEYSTONE JACK
TOOL-LESS VERSION**

PART NO.	DESCRIPTION
JMU6A1802-WH	Category 6A Unscreened Tool-less Keystone Jack White
JMU6A1802-BL	Category 6A Unscreened Tool-less Keystone Jack Black
JMU6A1802-GR	Category 6A Unscreened Tool-less Keystone Jack Green
JMU6A1802-BU	Category 6A Unscreened Tool-less Keystone Jack Blue

**UNSCREENED KEYSTONE JACK,
TOOL-LESS
VERSION, BUTTERFLY STYLE**

PART NO.	DESCRIPTION
JMS6A1801-SV	Category 6A Screened butterfly Style, Tool-less Keystone Jack Silver



CATEGORY 6A

PATCH CORDS

OSILAN's Category 6A Screened and Unscreened Patch cords are manufactured and tested individually to comply with ISO11801, EN 50173 Category 6A and EIA/TIA standards for enhanced performance.

Each cable consists of 4 pairs stranded conductors twisted together with varying laying lengths. Multiple colours are available for outer jacket sheath to enhance application identifications where necessary.

FEATURES AND BENEFITS

- o Exceeds ANSI/TIA-568-C.2 Category 6, ISO 11801 Category 6A/Class E standards and EN 50173 Category 6A.
- o Supports IEEE 802.3af, 802.3at, and 802.3bt type 3 and 4 for PoE applications up to 100 W.
- o Component EC Verified.
- o Outer Diameter 6mm.
- o Insulation Foam Polyethylene.
- o Available in UTP and U/FTP (Aluminium/polyester foil tape provides an individual screen for each pair).
- o Cables are fitted with plastic strain relief boots, for applications that may require continuous patching or a degree of stress relief applied.
- o Plug contacts plated with 50 micro inches of gold for superior performance
- o Each patch cord is 100% performance tested to component limits and wired to T568B.
- o Plug meets all applicable ANSI/TIA-1096-A requirements and IEC 60603-7 specifications.
- o Temperature (Installation): -30°C to +50°C
- o Temperature (Operation): -20°C to +75°C
- o LSZH IEC 60332-1 Sheath
- o Suitable for 10 Gigabit, 10GBase-T, Ethernet application
- o Multiple colours available.
- o Lightweight, Compact Design
- o Variable lengths (0.5,1,2,3,5,7,10,15,20,30m)



CATEGORY 6A

PATCH CORDS PART NO. GENERATOR

PATCH CORD	CONSTRUCTION		CATEGORY	TYPE OF JACKET	PAIRS/AWG		JACKET COLOURS	LENGTH	METER
PC	U/U	U/UTP	6A	H	0424	IG	International Grey	01	M
PC	U/U	U/UTP	6A	C	0424	BU	Blue	02	M
PC	U/U	U/UTP	6A	H	0423	OR	Orange	03	M
PC	U/U	U/UTP	6A	C	0423	YL	Yellow	05	M
PC	U/F	U/FTP	6A	H	0424	WH	White	07	M
PC	U/F	U/FTP	6A	H	0426	RD	Red	10	M
PC	U/U	U/UTP	6A	H	0426	GR	Green	15	M
PC-U/U6A-H0424-IG-03M:									
Category 6A U/UTP Patch Cords, LSZH Sheath, 3m, International Gray						VL	Violet	20	M



CATEGORY 6A U/UTP PATCH CORDS 23 AWG STRANDED, LSZH

PART NO.	DESCRIPTION
PC-U/U6A-H0423-IG-03M	Category 6A U/UTP Patch Cords, LSZH Sheath, 3m, International Gray
PC-U/U6A-H0423-GR-03M	Category 6A U/UTP Patch Cords, LSZH Sheath, 3m, Green
PC-U/U6A-H0423-BU-03M	Category 6A U/UTP Patch Cords, LSZH Sheath, 3m, Blue
PC-U/U6A-H0423-OR-03M	Category 6A U/UTP Patch Cords, LSZH Sheath, 3m, Orange
PC-U/U6A-H0423-WH-03M	Category 6A U/UTP Patch Cords, LSZH Sheath, 3m, White
PC-U/U6A-H0423-YL-03M	Category 6A U/UTP Patch Cords, LSZH Sheath, 3m, Yellow
PC-U/U6A-H0423-VL-03M	Category 6A U/UTP Patch Cords, LSZH Sheath, 3m, Violet

CATEGORY 6A U/UTP PATCH CORDS 23 AWG STRANDED, LSZH

PART NO.	DESCRIPTION
PC-U/F6A-H0423-IG-03M	Category 6A U/FTP Patch Cords, LSZH Sheath, 3m, International Gray
PC-U/F6A-H0423-GR-03M	Category 6A U/FTP Patch Cords, LSZH Sheath, 3m, Green
PC-U/F6A-H0423-BU-03M	Category 6A U/FTP Patch Cords, LSZH Sheath, 3m, Blue
PC-U/F6A-H0423-OR-03M	Category 6A U/FTP Patch Cords, LSZH Sheath, 3m, Orange
PC-U/F6A-H0423-WH-03M	Category 6A U/FTP Patch Cords, LSZH Sheath, 3m, White
PC-U/F6A-H0423-YL-03M	Category 6A U/FTP Patch Cords, LSZH Sheath, 3m, Yellow
PC-U/F6A-H0423-VL-03M	Category 6A U/FTP Patch Cords, LSZH Sheath, 3m, Violet





CATEGORY 7 & 7A



CATEGORY 7

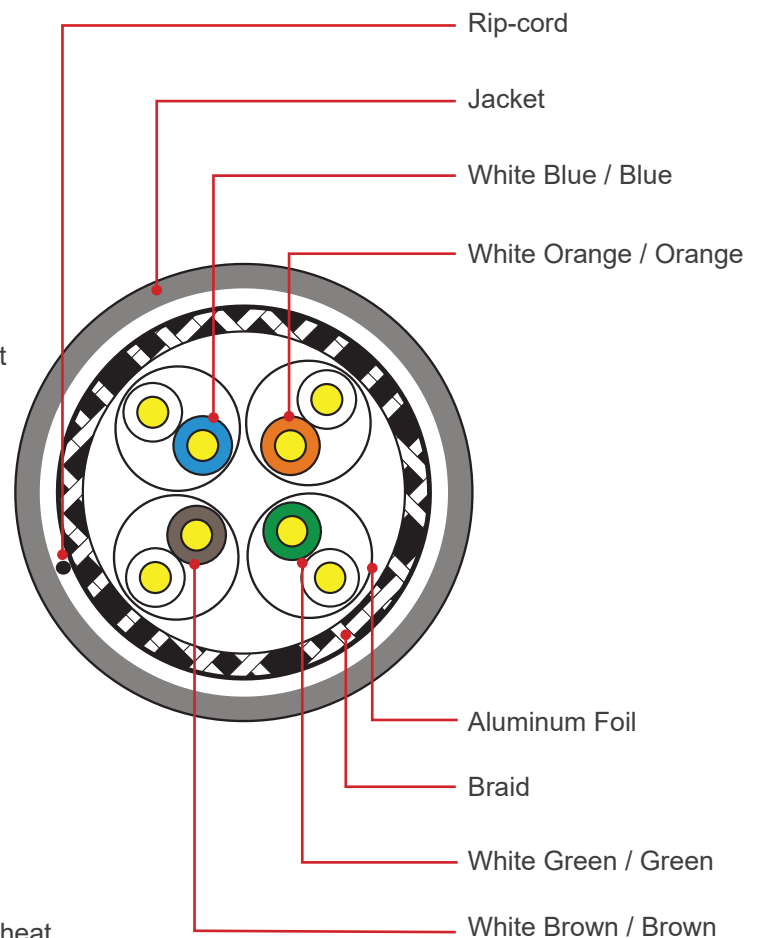
COPPER CABLE

OSILAN's category 7 cables exceed the Category 7/Class F and Category 7A/Class FA performance standards.

They are specified to 1000MHz respectively and are suitable for use in all Class F structured wiring cable systems. The applications supported include 10 Gigabit Ethernet, Gigabit Ethernet, PoE and PoE+ and broadband video transmissions at frequencies as high as 1000 MHz.

FEATURES AND BENEFITS

- o **Standard Compliance:**
ISO/IEC 11801 and EN 50173-1
- o Comply with ISO/IEC 61156-5 and EN 50288-4-1
- o 23 AWG Solid Annealed Copper Wires
- o 4 Twisted Pairs Individually Screened and cabled together – providing EMI immunity
- o Overall Braided Screen – for improved shielding efficiency, increased mechanical robustness and heat dissipation
- o Designed to Support all Class F protocols including 10GBASE-T
- o Supports Power over Ethernet (PoE) and Power over Ethernet Plus (PoE+) Applications
- o Support high bandwidth and high frequency multi-media broadcast and cable sharing applications
- o Insulation: Skin-foam-skin PE
- o **Inner Screen:**
Aluminum Foil
- o **Outer Screen:**
Tinned Copper 0.10 mm, coverage 40%
- o **Installation temperature range:**
-30°C to 50°C
- o **Temperature (Operation):**
-10°C to +60°C
- o Channel characterized to 600 MHz /1000 MHz
- o Descending length cable markings enable easy identification of remaining cable which reduces installation time and cable waste.
- o 25 Years System Warranty



CAT 7



CATEGORY 7

OSILAN CATEGORY 7 S/FTP LSZH

OSILAN CATEGORY 7 SF/FTP LSZH

PART NO.	DESCRIPTION	PACKING	PART NO.	DESCRIPTION	PACKING
SF7-H0423-IG	Category 7 S/FTP Cables, 4Pairs, 23AWG Solid Copper, LSZH Sheath Colour International Grey	500m Box	SFF7-H0423-IG	Category 7 SF/FTP Cables, 4Pairs, 23AWG Solid Copper, LSZH Sheath Colour International Grey	500m Box
SF7-H0423-BU	Category 7 S/FTP Cables, 4Pairs, 23AWG Solid Copper, LSZH Sheath Colour Blue	500m Box	SFF7-H0423-BU	Category 7 SF/FTP Cables, 4Pairs, 23AWG Solid Copper, LSZH Sheath Colour Blue	500m Box
SF7-H0423-OR	Category 7 S/FTP Cables, 4Pairs, 23AWG Solid Copper, LSZH Sheath Colour Orange	500m Box	SFF7-H0423-OR	Category 7 SF/FTP Cables, 4Pairs, 23AWG Solid Copper, LSZH Sheath Colour Orange	500m Box
SF7-H0423-WH	Category 7 S/FTP Cables, 4Pairs, 23AWG Solid Copper, LSZH Sheath Colour White	500m Box	SFF7-H0423-WH	Category 7 SF/FTP Cables, 4Pairs, 23AWG Solid Copper, LSZH Sheath Colour White	500m Box
SF7-H0423-RD	Category 7 S/FTP Cables, 4Pairs, 23AWG Solid Copper, LSZH Sheath Colour Red	500m Box	SFF7-H0423-RD	Category 7 SF/FTP Cables, 4Pairs, 23AWG Solid Copper, LSZH Sheath Colour Red	500m Box
SF7-H0423-GR	Category 7 S/FTP Cables, 4Pairs, 23AWG Solid Copper, LSZH Sheath Colour Green	500m Box	SFF7-H0423-GR	Category 7 SF/FTP Cables, 4Pairs, 23AWG Solid Copper, LSZH Sheath Colour Green	500m Box
SF7-H0423-YL	Category 7 S/FTP Cables, 4Pairs, 23AWG Solid Copper, LSZH Sheath Colour Yellow	500m Box	SFF7-H0423-YL	Category 7 SF/FTP Cables, 4Pairs, 23AWG Solid Copper, LSZH Sheath Colour Yellow	500m Box
SF7-H0423-VL	Category 7 S/FTP Cables, 4Pairs, 23AWG Solid Copper, LSZH Sheath Colour Violet	500m Box	SFF7-H0423-VL	Category 7 SF/FTP Cables, 4Pairs, 23AWG Solid Copper, LSZH Sheath Colour Violet	500m Box

CATEGORY 7A

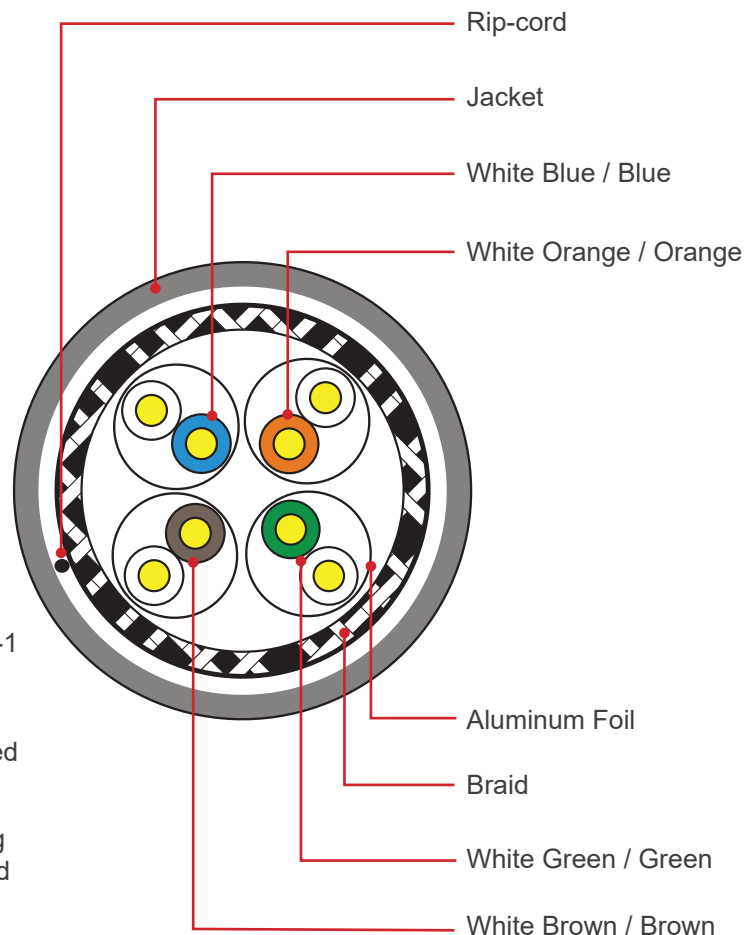
COPPER CABLE

OSILAN's category 7 cables exceed the Category 7/Class F and Category 7A/Class FA performance standards.

They are specified to 1000MHz respectively and are suitable for use in all Class F structured wiring cable systems. The applications supported include 10G Gigabit Ethernet, Gigabit Ethernet, PoE and PoE+ and broadband video transmissions at frequencies as high as 1000 MHz.

FEATURES AND BENEFITS

- **Standard Compliance:**
ISO/IEC 11801 and EN 50173-1
- Comply with ISO/IEC 61156-5 and EN 50288-4-1
- 23 AWG Solid Annealed Copper Wires
- 4 Twisted Pairs Individually Screened and cabled together – providing EMI immunity
- Overall Braided Screen – for improved shielding efficiency, increased mechanical robustness and heat dissipation
- Designed to Support all Class F protocols including 10GBASE-T
- Supports Power over Ethernet (PoE) and Power over Ethernet Plus (PoE+) Applications
- Support high bandwidth and high frequency multi-media broadcast and cable sharing applications
- **Insulation:**
Skin-foam-skin PE
- **Inner Screen:**
Aluminium Foil
- **Outer Screen:**
Tinned Copper 0.10 mm, coverage 40%
- **Installation temperature range:**
-30°C to 50°C
- **Temperature (Operation):**
-10°C to +60°C
- Channel characterized to 600 MHz /1000 MHz
- Descending length cable markings enable easy identification of remaining cable which reduces installation time and cable waste.
- 25 Years System Warranty



CAT 7



CATEGORY 7A

OSILAN CATEGORY 7A S/FTP LSZH

PART NO.	DESCRIPTION	PACKING
S/F7A-H0423-IG	Category 7A S/FTP Cables, 4Pairs, 23AWG Solid Copper, LSZH Colour International Grey	500m Box
S/F7A-H0423-BU	Category 7A S/FTP Cables, 4Pairs, 23AWG Solid Copper, LSZH Colour Blue	500m Box
S/F7A-H0423-OR	Category 7A S/FTP Cables, 4Pairs, 23AWG Solid Copper, LSZH Colour Orange	500m Box
S/F7A-H0423-WH	Category 7A S/FTP Cables, 4Pairs, 23AWG Solid Copper, LSZH Colour White	500m Box
S/F7A-H0423-RD	Category 7A S/FTP Cables, 4Pairs, 23AWG Solid Copper, LSZH Colour Red	500m Box
S/F7A-H0423-GR	Category 7A S/FTP Cables, 4Pairs, 23AWG Solid Copper, LSZH Colour Green	500m Box
S/F7A-H0423-YL	Category 7A S/FTP Cables, 4Pairs, 23AWG Solid Copper, LSZH Colour Yellow	500m Box
S/F7A-H0423-VL	Category 7A S/FTP Cables, 4Pairs, 23AWG Solid Copper, LSZH Colour Violet	500m Box

OSILAN CATEGORY 7A SF/FTP LSZH

PART NO.	DESCRIPTION	PACKING
SF/F7A-H0423-IG	Category 7A SF/FTP Cables, 4Pairs, 23AWG Solid Copper, LSZH Sheath Colour International Grey	500m Box
SF/F7A-H0423-BU	Category 7A SF/FTP Cables, 4Pairs, 23AWG Solid Copper, LSZH Sheath Colour Blue	500m Box
SF/F7A-H0423-OR	Category 7A SF/FTP Cables, 4Pairs, 23AWG Solid Copper, LSZH Sheath Colour Orange	500m Box
SF/F7A-H0423-WH	Category 7A SF/FTP Cables, 4Pairs, 23AWG Solid Copper, LSZH Sheath Colour White	500m Box
SF/F7A-H0423-RD	Category 7A SF/FTP Cables, 4Pairs, 23AWG Solid Copper, LSZH Sheath Colour Red	500m Box
SF/F7A-H0423-GR	Category 7 A SF/FTP Cables, 4Pairs, 23AWG Solid Copper, LSZH Sheath Colour Green	500m Box
SF/F7A-H0423-YL	Category 7 A S/FTP Cables, 4Pairs, 23AWG Solid Copper, LSZH Sheath Colour Yellow	500m Box
SF/F7A-H0423-VL	Category 7A SF/FTP Cables, 4Pairs, 23AWG Solid Copper, LSZH Sheath Colour Violet	500m Box



CATEGORY 8



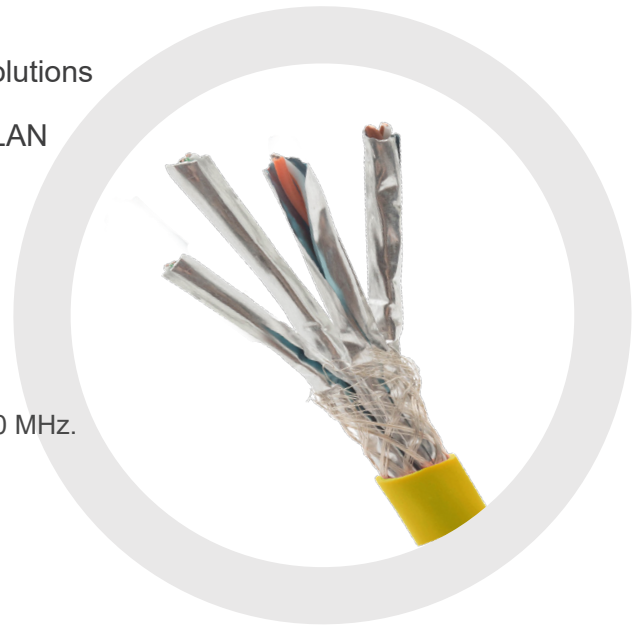
CATEGORY 8 S/FTP COPPER CABLE

OSILAN is flexible and ideal for very fast data transmission solutions that fully comply with Category 8.1/8.2 and ideal for use in LAN protocols and 40 Gigabit Ethernet:

25gbase-t (25-gigabit ethernet) and 40gbase-t (40-gigabit ethernet)

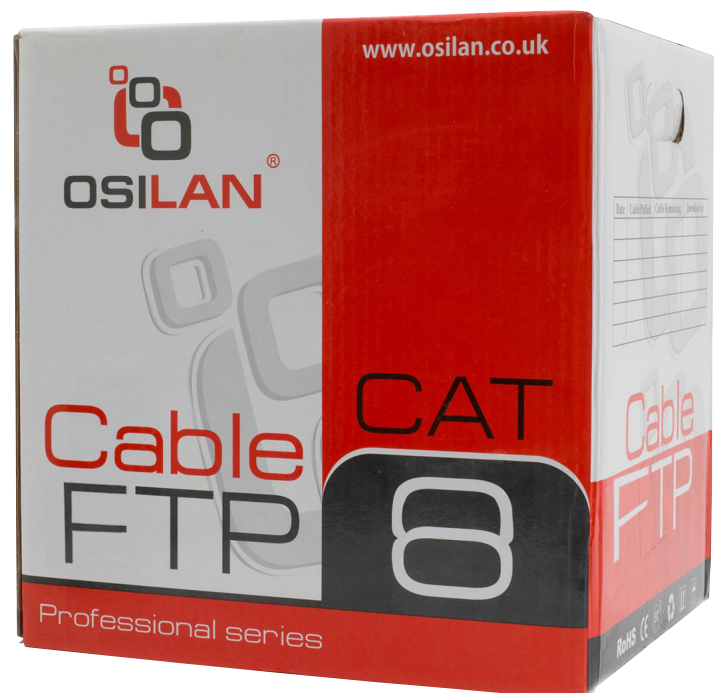
10base-t (ethernet), 100base-t (fast ethernet), 1000base-t (gigabit ethernet), 10gbase-t (10-gigabit ethernet).

POE, Voice, Broadband videos transmission at frequencies up to 2000 MHz.



FEATURES AND BENEFITS:

- Standard Compliance: ANSI/TIA-568-C.2-1 Category 8.1/8.2, ISO 11801 2nd Edition Class standards, IEEE 802.3an-2006 and EN 50173:2007 EN 50288-3-1:2013.
- Exceeds requirements of ANSI/TIA-568-C.2-1 Category 8.1/8.2, and IEC 61156-5 component standards.
- Supports IEEE 802.3af, 802.3at, and 802.3bt type 3 and 4 for PoE applications up to 100 W.
- OSILAN Cat 8.1/8.2 Solution provides End to end solution in both screened designs.
- The performance headroom provided by OSILAN Cat 8.1/8.2 Solution makes it a reliable and safe choice of cabling to support 25/40 Gigabit Ethernet.
- Choice of S/FTP 22AWG cable available in LSZH.
- Insulation: Skin-foam-skin PE.
- Screen: Aluminium Foil.
- Drain Wire: 0.45mm Tinned Copper (TC) for Cat 8 Cables.
- Installation temperature range: -30°C to 50°C.
- Temperature (Operation): -10°C to +60°C.
- Channel characterized to 2000 MHz.
- Descending length cable markings enable easy identification of remaining cable which reduces installation time and cable scrap.
- 25 Years System Warranty.



OSILAN CATEGORY 8 S/FTP PVC

Part No.	Description	Packing
SF8-C0422-IG	Category 8 S/FTP Cables, 4Pairs, 22AWG Solid Copper, PVC Sheath, colour International Grey	500m Box
SF8-C0422-BU	Category 8 S/FTP Cables, 4Pairs, 22AWG Solid Copper, PVC Sheath, colour Blue	500m Box
SF8-C0422-OR	Category 8 S/FTP Cables, 4Pairs, 22AWG Solid Copper, PVC Sheath, colour Orange	500m Box
SF8-C0422-WH	Category 8 S/FTP Cables, 4Pairs, 22AWG Solid Copper, PVC Sheath, colour White	500m Box
SF8-C0422-RD	Category 8 S/FTP Cables, 4Pairs, 22AWG Solid Copper, PVC Sheath, colour Red	500m Box
SF8-C0422-GR	Category 8 S/FTP Cables, 4Pairs, 22AWG Solid Copper, PVC Sheath, colour Green	500m Box
SF8-C0422-YL	Category 8 S/FTP Cables, 4Pairs, 22AWG Solid Copper, PVC Sheath, colour Yellow	500m Box
SF8-C0422-VL	Category 8 S/FTP Cables, 4Pairs, 22AWG Solid Copper, PVC Sheath, colour Violet	500m Box

OSILAN CATEGORY 8 S/FTP LSZH

Part No.	Description	Packing
SF8-H0422-IG	Category 8 S/FTP Cables, 4Pairs, 22AWG Solid Copper, LS0H Sheath, colour International Grey	500m Box
SF8-H0422-BU	Category 8 S/FTP Cables, 4Pairs, 22AWG Solid Copper, LS0H Sheath, colour Blue	500m Box
SF8-H0422-OR	Category 8 S/FTP Cables, 4Pairs, 22AWG Solid Copper, LS0H Sheath, colour Orange	500m Box
SF8-H0422-WH	Category 8 S/FTP Cables, 4Pairs, 22AWG Solid Copper, LS0H Sheath, colour White	500m Box
SF8-H0422-RD	Category 8 S/FTP Cables, 4Pairs, 22AWG Solid Copper, LS0H Sheath, colour Red	500m Box
SF8-H0422-GR	Category 8 S/FTP Cables, 4Pairs, 22AWG Solid Copper, LS0H Sheath, colour Green	500m Box
SF8-H0422-YL	Category 8 S/FTP Cables, 4Pairs, 22AWG Solid Copper, LS0H Sheath, colour Yellow	500m Box
SF8-H0422-VL	Category 8 S/FTP Cables, 4Pairs, 22AWG Solid Copper, LS0H Sheath, colour Violet	500m Box



CATEGORY 8

CATEGORY 8

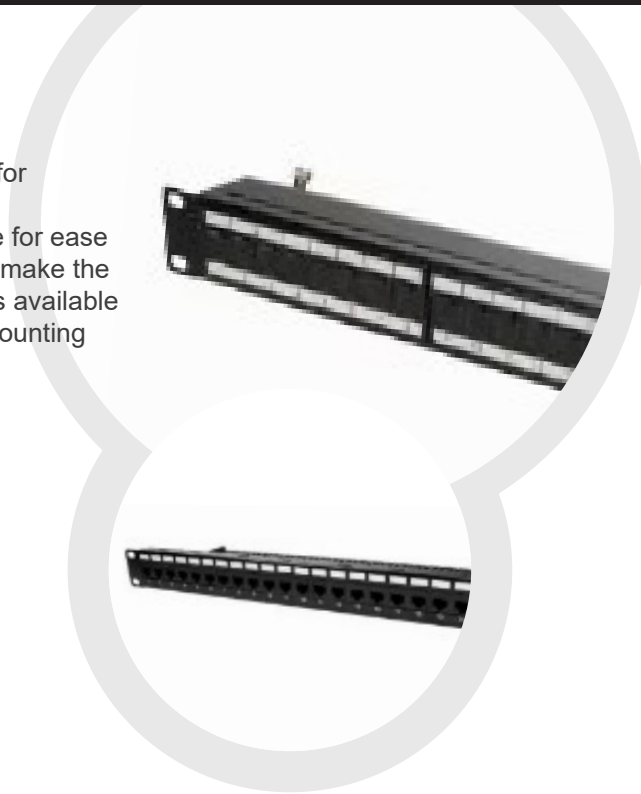
PATCH PANELS

OSILAN Category 8 Patch Panels comply with the current standards for enhanced Category 8.

All outlets are numerically identified with an additional writable surface for ease of port naming. Each panel has integrated rear cable management to make the installation easier. A choice of port density –24 Port 1U, 48 Port 2U– is available to suit all applications. Each panel is supplied with cable ties, panel mounting accessories and short form installation instructions.

FEATURES AND BENEFITS

- Exceeds requirements of ANSI/TIA-568-C.2-1 Category 8, IEEE 802.3an-2006, and ISO 11801 channel standards.
- Exceeds requirements of ANSI/TIA-568-C.2-1 Category 8 and IEC 60603-7-41 Category 8 component standards.
- Supports IEEE 802.3af, 802.3at, and IEEE 802.3bt type 3 and 4 for PoE applications up to 100 W.
- Each port is 100% tested to ensure NEXT and RL performance.
- Contacts plated with 50 micro inches of gold for superior performance.
- Angled versions allow for higher density applications by easily routing the patch cords to each side of the panel eliminating the need for horizontal cable management.
- Terminate 4-pair, 22 – 26 AWG, 100 ohm, solid or stranded twisted pair cable.
- Pre-printed numbers above each port for easy identification.
- Mount to standard EIA racks with optional extender bracket.
- Wiring Specification : T568A & T568B.
- Connecting Tools : 110 Punch tools , Krone Type termination tools.
- Operating temperature: -10°C to 60°C
- Storage temperature: -40°C to 70°C
- Relative humidity: Max. Non-condensing 93%.
- Empty Panel is available in flush mount and Angled Style with 24 ports, 48 ports.
- OSILAN Patch Panel Housing is Cold-Rolled Steel (CRS).
- Earthing kit, cage nuts and mini cable ties included.



Category SF8 compliant Patch Panel - Screened

Part No.	Description
PPI-SF8-24P-1U-BK	Category 8 Screened Patch Panel 24 Port 1U -Black
PPI- SF8-48P-2U-BK	Category 8 Screened Patch Panel 48 Port 2U - Black
PPI- SF8-24P-1U-BU	Category 8 Screened Patch Panel 24 Port 1U -Blue
PPI- SF8-48P-2U-BU	Category 8 Screened Patch Panel 48 Port 2U - Blue
PPI- SF8-24P-1U-GR	Category 8 Screened Patch Panel 24 Port 1U -Green
PPI- SF8-48P-2U-GR	Category 8 Screened Patch Panel 48 Port 2U - Green
PPI- SF8-24P-1U-RD	Category 8 Screened Patch Panel 24 Port 1U -Red
PPI- SF8-48P-2U-RD	Category 8 Screened Patch Panel 48 Port 2U - Red

CATEGORY 8

JACK MODULES

OSILAN Shielded Snap-in-Jacks offer true Category 8 component performance. The Jacks are suitable for mounting in range of housings from patch panels, faceplates, floor boxes, and work areas distribution enclosures.

- Category 8 Screened Keystone – Tool-less Jack – Butterfly Style.



FEATURES AND BENEFITS

- Exceeds ANSI/TIA-568-C.2-1 Category 8, IEC 60603-7-41 component standards from 1 to 2000 MH and EN 50173-1:2011 EN 50173-2:2007.
- Supports IEEE 802.3af, 802.3at, and IEEE 802.3bt type 3 and 4 for PoE applications up to 100 W
- EC Verified
- Suitable for 25/40 Gigabit and 10GBase-T Ethernet application
- Terminates full range of 22 – 26 AWG conductors
- Operating Temperature: -10°C to 60°C
- Storage Temperature: -40°C to 70°C.
- Each jack is 100% tested to ensure NEXT and RL performance and is individually serialized for traceability.
- Connector Body: High-impact, fire-retardant plastic rated UL 94V0.
- Contacts plated with 50 micro inches of gold.
- Accept 6 and 8-position modular plugs without damage.
- Number of IDC Termination: Minimum 200 re terminations.
- Wiring Code: T568A and T568B wiring schemes.
- Accept 6 and 8-position modular plugs without damage
- Termination style can be done without tools (Tool-less type)
- Suitable for patch panel and faceplate mounting
- Integrated strain relief with wire cap provides 360 ° conductive paths for grounding.
- Fully grounded and bonded to patch panel when installed in OSILAN Metal Modular Patch Panel.

CATEGORY 8

Screened keystone jack, Tool- less

Version - Butterfly style

Part No.	Description
JMS81801-SV	Category 8 Screened butterfly Style ,Tool-less Keystone Jack -Silver

CATEGORY 8

PATCH CORDS

OSILAN Category 8 Screened Patch cords are manufactured and tested individually to comply with ISO11801, EN 50173 Category 8 and EIA/TIA standards for enhanced performance. Each cable consists of 4 pairs stranded conductors twisted together with varying lay lengths. The outer sheath is of LSZH. Multiple colours are available for outer jacket sheath to enhance application identifications where necessary.

FEATURES AND BENEFITS:

- Exceeds requirements of ANSI/TIA-568-C.2-1 Category 8, IEEE 802.3an-2006, and ISO 11801 channel standards.
- Supports IEEE 802.3af, 802.3at, and 802.3bt type 3 and 4 for PoE applications up to 100 W.
- Component EC Verified.
- Conductor 24-26 AWG, Stranded Plain Copper.
- Insulation Foam Polyethylene.
- Cables are fitted with plastic strain relief boots, for applications that may require continuous patching or a degree of stress relief applied.
- Plug contacts plated with 50 micro inches of gold for superior performance
- Each patch cord is 100% performance tested to component limits and wired to T568B.
- Plug meets all applicable ANSI/TIA-1096-A requirements and IEC 60603-7 specifications.
- Temperature (Installation): -30°C to +50°C
- Temperature (Operation): -20°C to +75°C
- LSZH IEC 60332-1 Sheath
- Suitable for 25/40 Gigabit, 25GBase-T, 40GBase-T, 10GBase-T, Ethernet application
- Multiple colours available.
- Lightweight, Compact Design
- Variable lengths (0.5, 1, 2, 3, 5, 7, 10, 15, 20, 30m)

OSILAN CAT8 PATCH CORDS PART NO. GENERATOR

PATCH CORD	CATEGORY		CATEGORY	Type of jacket	Pairs/AWG	Jacket Colours	Length	Meter	
PC	S	S/FTP	8	H	0426	IG	International Grey	01	M
PC	S	S/FTP	8	H	0424	BU	Blue	02	M
PC-S/F8-H0426-IG-03M : Category 8 S/FTP Patch Cords , 26 AWG, LSZH Sheath , 3m ,International Gray						OR	Orange	03	M
						YL	Yellow	05	
PC-S/F8-H0424-IG-03M : Category 8 S/FTP Patch Cords , 24 AWG, LSZH Sheath , 3m ,International Gray						WH	White	07	M
						RD	Red	10	M
						GR	Green	15	M

Category 8 S/FTP Patch Cords, 26 AWG Stranded, LSZH

Part No.	Description
PC-S/F8-H0426-IG-03M	Category 8 S/FTP Patch cords, 26 AWG, LSZH sheath, 3m, International Gray
PC-S/F8-H0426-GR-03M	Category 8 S/FTP Patch cords, 26 AWG, LSZH sheath, 3m, Green
PC-S/F8-H0426-BU-03M	Category 8 S/FTP Patch cords, 26 AWG, LSZH sheath, 3m, Blue
PC-S/F8-H0426-OR-03M	Category 8 S/FTP Patch cords, 26 AWG, LSZH sheath, 3m, Orange
PC-S/F8-H0426-WH-03M	Category 8 S/FTP Patch cords, 26 AWG, LSZH sheath, 3m, White
PC-S/F8-H0426-YL-03M	Category 8 S/FTP Patch cords, 26 AWG, LSZH sheath, 3m, Yellow
PC-S/F8-H0426-VL-03M	Category 8 S/FTP Patch cords, 26 AWG, LSZH sheath, 3m, Violet

Category 8 S/FTP Patch Cords, 24 AWG Stranded, LSZH

Part No.	Description
PC-S/F8-H0424-IG-03M	Category 8 S/FTP Patch Cords, 24 AWG, LS0H Sheath, 3M , International Gray
PC-S/F8-H0424-GR-03M	Category 8 S/FTP Patch Cords, 24 AWG, LS0H Sheath, 3M , Green
PC-S/F8-H0424-BU-03M	Category 8 S/FTP Patch Cords, 24 AWG, LS0H Sheath, 3M , Blue
PC-S/F8-H0424-OR-03M	Category 8 S/FTP Patch Cords, 24 AWG, LS0H Sheath, 3M , Orange
PC-S/F8-H0424-WH-03M	Category 8 S/FTP Patch Cords, 24 AWG, LS0H Sheath, 3M , White
PC-S/F8-H0424-YL-03M	Category 8 S/FTP Patch Cords, 24 AWG, LS0H Sheath, 3M , Yellow
PC-S/F8- H0424-VL-03M	Category 8 S/FTP Patch Cords, 24 AWG, LS0H Sheath, 3M , Violet



CATEGORY 8



MISCELLANEOUS CABLES

MISCELLANEOUS CABLES

OUTSIDE PLANT (OSP) CABLES

OSILAN understands that not every application is the same and unique situations and environments may call for a different cable solution.

Osilan has the copper cable you need for a variety of voice, data and control applications.

FEATURES AND BENEFITS

- OSP products exceed Category 6A, Category 6 or Category 5e requirements as per ANSI/TIA/EIA-568-C.2
- Available in Category 6A, Category 6 and 5E Outside Plant (OSP) cables
- Each product has a thick polyethylene jacket for better moisture and cut through resistance
- 100% gel-filled and non-sticky PP compound that's easy to remove when terminating

PART NO.	DESCRIPTION	PACKING
OSP6A-P0423-BL	Category 6A OSP, 4-pair, 23 AWG, Black	305m
OSP6-P0423-BL	Category 6 OSP, 4-pair, 24 AWG, Black	305m
OSP5E-P0423-BL	Category 5E OSP,4-pair, 24 AWG, Black	305m



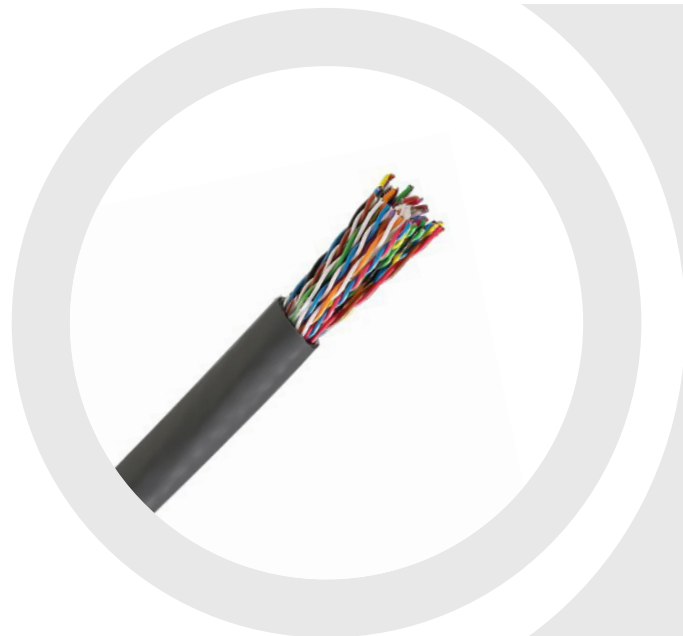
BACKBONE INDOOR CABLES

FEATURES AND BENEFITS

- Available in 25-pair Category 5E backbone cables for high-speed applications or in Category 3 UTP multi-pair cables, including up to 300-pair count cables for large voice communication systems.
- Available in plenum and non-plenum versions.
- 25-pair Cat 5e backbone cables are designed to meet and exceed the Category 5E transmission characteristics including the Power Sum Near End Crosstalk (NEXT) requirements of ANSI/TIA/EIA-568-C.2 Standard and ISO 11801 2nd Edition Class D channel standards

Supports IEEE 802.3af, 802.3at, and 802.3bt type 3 and 4 for PoE applications up to 100 W. Higher immunity to the effects of electromagnetic interference, minimized disruption to transmission signals.

Temperature Rating: 60°C

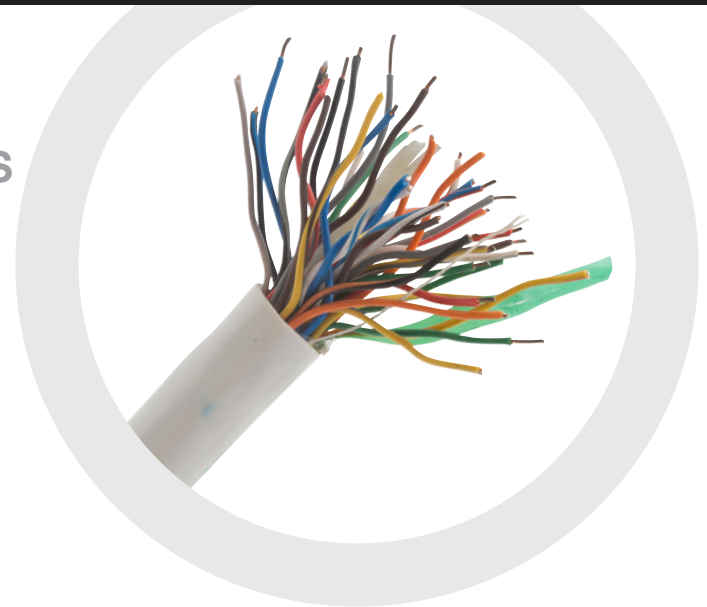


PART NO.	DESCRIPTION	PACKING
U5E-C2524-BU	Category 5E, 25-pair, 24 AWG, CMR, Blue	305m
U5E-H2524-IG	Category 5E, 25-pair, 24 AWG, CMR, International Grey	305m
U5E-H2524-IG	Category 5E, 25-pair, 24 AWG, CMP, International Grey	305m

MULTI PAIRS

CATEGORY 3 BACKBONE CABLES

- o Perfect for low data rate networks or voice systems,
- o 24 AWG Solid Bare Conductors.
- o Available for CMR and CMP.
- o Suitable for horizontal and backbone installations
- o Better crush resistance
- o Meets TIA 568-C.2 Category 3 requirements
- o Variety of pair counts ranging from 2 pair to 400 pair
- o Armour optional



PART NO.	DESCRIPTION	PACKING
U3-H00224-IG	Category 3 2-pair, 24 AWG, CMP, International Grey	305m
U3-C00224-IG	Category 3 2-pair, 24 AWG, CMR, International Grey	305m
U3-H00424-IG	Category 3 4-pair, 24 AWG, CMP, International Grey	305m
U3-C00424-IG	Category 3 4-pair, 24 AWG, CMR, International Grey	305m
U3-H02524-IG	Category 3 25-pair, 24 AWG, CMP, International Grey	305m
U3-C02524-IG	Category 3 25-pair, 24 AWG, CMR, International Grey	305m
U3-H05024-IG	Category 3 50-pair, 24 AWG, CMP, International Grey	305m
U3-C05024-IG	Category 3 50-pair, 24 AWG, CMR, International Grey	305m
U3-H10024-IG	Category 3 100-pair, 24 AWG, CMP, International Grey	305m
U3-C10024-IG	Category 3 100-pair, 24 AWG, CMR, International Grey	305m
U3-H20024-IG	Category 3 200-pair, 24 AWG, CMP, International Grey	305m
U3-C20024-IG	Category 3 200-pair, 24 AWG, CMR, International Grey	305m

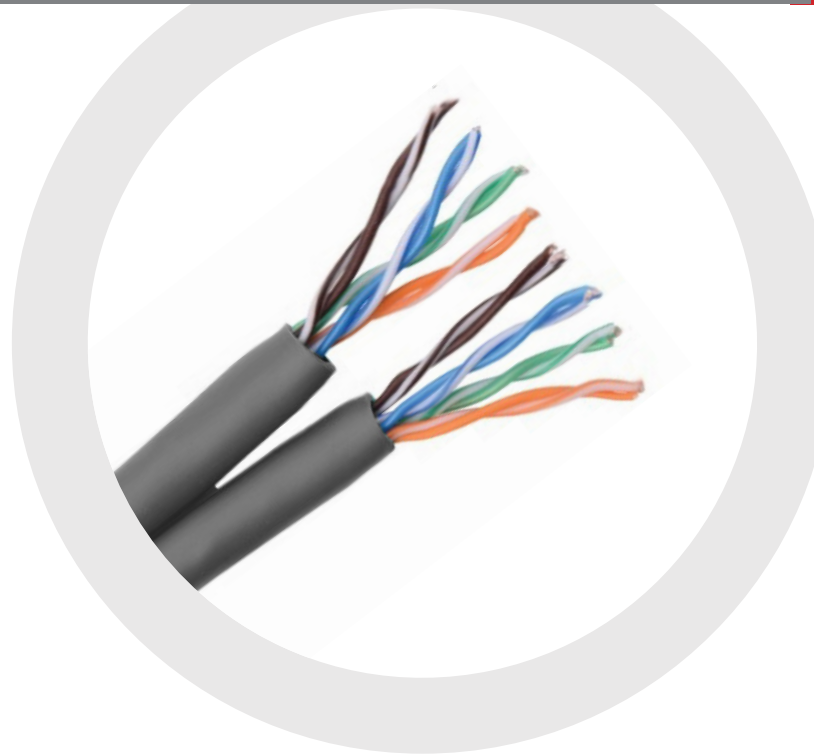
PART NO.	DESCRIPTION	PACKING
U3-H30024-IG	Category 3 300-pair, 24 AWG, CMP, International Grey	305m
U3-C30024-IG	Category 3 300-pair, 24 AWG, CMR, International Grey	305m
U3-H40024-IG	Category 3, 400-pair, 24 AWG, CMP, International Grey	305m
U3-C40024-IG	Category 3, 400-pair, 24 AWG, CMR, International Grey	305m
FU3-AH20024-IG	Category 3, 200-pair, Corrugated Armoured, 24 AWG, CMP, International Grey	305m
FU3-AC20024-IG	Category 3, 200-pair, Corrugated Armoured, 24 AWG, CMR, International Grey	305m
FU3-AH30024-IG	Category 3, 300-pair, Corrugated Armored, 24 AWG, CMP, International Grey	305m
FU3-AC30024-IG	Category 3, 300-pair, Corrugated Armored, 24 AWG, CMR, International Grey	305m
FU3-AH40024-IG	Category 3, 400-pair, Corrugated Armored, 24 AWG, CMP, International Grey	305m
FU3-AC40024-IG	Category 3, 400-pair, Corrugated Armored, 24 AWG, CMR, International Grey	305m

DUPLEX CABLES

CATEGORY 5E

FEATURES AND BENEFITS

- Category 5E Unscreened Dual LSZH Cables are manufactured and tested to the ISO 11801, EN 50173 and ANSI/TIA-568-C standards for enhanced performance Category 5 cables
- Come bundled with two 4-pair cables for easy breakout and identification
- Each twin cable consists of two sets of 8 colour coded polyethylene insulated conductors.
- Supports Gigabit Ethernet
- LSZH IEC 332-1 Sheath



PART NO.	DESCRIPTION	PACKING
DU5E-H0424-IG	Category 5E U/UTP DUPLEX Cables, 4Pairs, 24AWG Solid Copper, LSZH Sheath Colour International Grey	305m
DU5E-H0424-BU	Category 5E U/UTP DUPLEX Cables, 4Pairs, 24AWG Solid Copper, LSZH Sheath Colour Blue	305m
DU5E-H0424-OR	Category 5E U/UTP DUPLEX Cables, 4Pairs, 24AWG Solid Copper, LSZH Sheath Colour Orange	305m
DU5E-H0424-WH	Category 5E U/UTP DUPLEX Cables, 4Pairs, 24AWG Solid Copper, LSZH Sheath Colour White	305m
DU5E-H0424-RD	Category 5E U/UTP DUPLEX Cables, 4Pairs, 24AWG Solid Copper, LSZH Sheath Colour Red	305m
DU5E-H0424-GR	Category 5E U/UTP DUPLEX Cables, 4Pairs, 24AWG Solid Copper, LSZH Sheath Colour Green	305m
DU5E-H0424-YL	Category 5E U/UTP DUPLEX Cables, 4Pairs, 24AWG Solid Copper, LSZH Sheath Colour Yellow	305m
DU5E-H0424-VL	Category 5E U/UTP DUPLEX Cables, 4Pairs, 24AWG Solid Copper, LSZH Sheath Colour Violet	305m



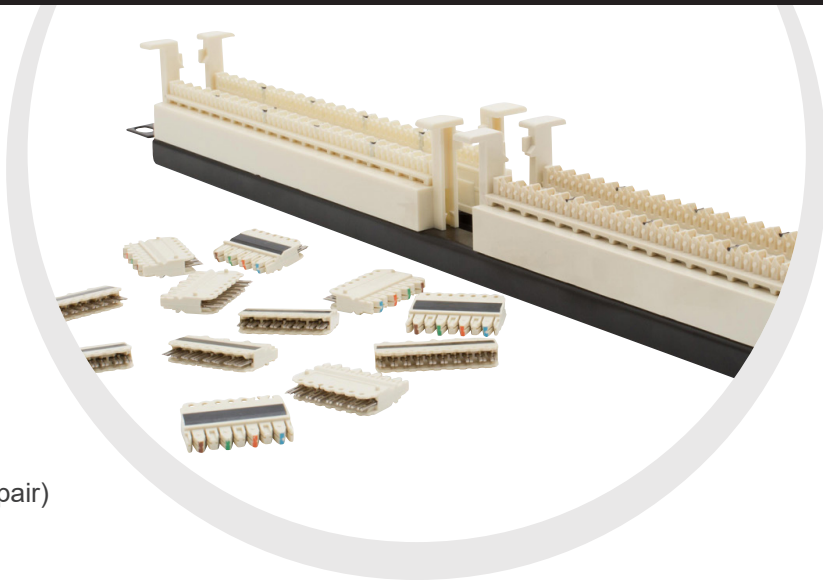
OSILAN 110
CROSS
CONNECT
SYSTEM

SYSTEM KITS

CATEGORY 6

FEATURES AND BENEFITS

- Exceeds ANSI/TIA-568-C.2 Category 6 standard
- Suitable for use in cross-connects and consolidation point applications.
- Kits consist of one Wiring Block (100-pair or 300- pair) with legs, Connecting Blocks (4-pair or 5-pair), Designation Strips and Labels.
- Contain all material required to terminate distribution or equipment cables into a 110 Cross-Connect System.
- Available in Category 6 19" Rack Mount Panels or Kit.



PART NO.	DESCRIPTION	STD PACKAGE
O110CB-6-100-KIT4	Category 6 110 Cross-Connect Kit, 100-pair, with 4-pair Connecting Blocks	1
O110CB-6-100-KIT5	Category 6 110 Cross-Connect Kit, 100-pair, with 5-pair Connecting Blocks	1
O110CB-6-300-KIT4	Category 6 110 Cross-Connect Kit, 300-pair, with 4-pair Connecting Blocks	1
O110CB-6-300-KIT5	Category 6 110 Cross-Connect Kit, 300-pair, with 5-pair Connecting Blocks	1
O110CB-6-36P-KIT4	19 " Category 6 110 Cross-Connect Kit, 2X144 Pairs (36 Ports), with 4-pair Connecting Blocks	1
O110CB-6-24P-KIT4	19 " Category 6 110 Cross-Connect Kit, 2X96 Pairs (24 Ports), with 4-pair Connecting Blocks	1

CONNECTING BLOCKS

CATEGORY 6

FEATURES AND BENEFITS

- Exceeds ANSI/TIA-568-C.2 Category 6 standard.
- Equipped with double-sided Insulation Displacement Connection (IDC) clips that are used to terminate plastic insulated solid copper conductors in 110 Wiring Blocks.
- Available in 4 or 5-pair connection blocks.
- Can be terminated with single or multiple position punch down tools
- Constructed of UL 94V-0 high impact polycarbonate material..



PART NO.	DESCRIPTION	STD PACKAGE
O110CB-6-CB4	Category 6 110 Cross-Connect Kit, 100-pair, with 4-pair Connecting Blocks	1
O110CB-6-CB5	Category 6 110 Cross-Connect Kit, 100-pair, with 5-pair Connecting Blocks	1

PATCH CORD ASSEMBLIES

CATEGORY 6

FEATURES AND BENEFITS

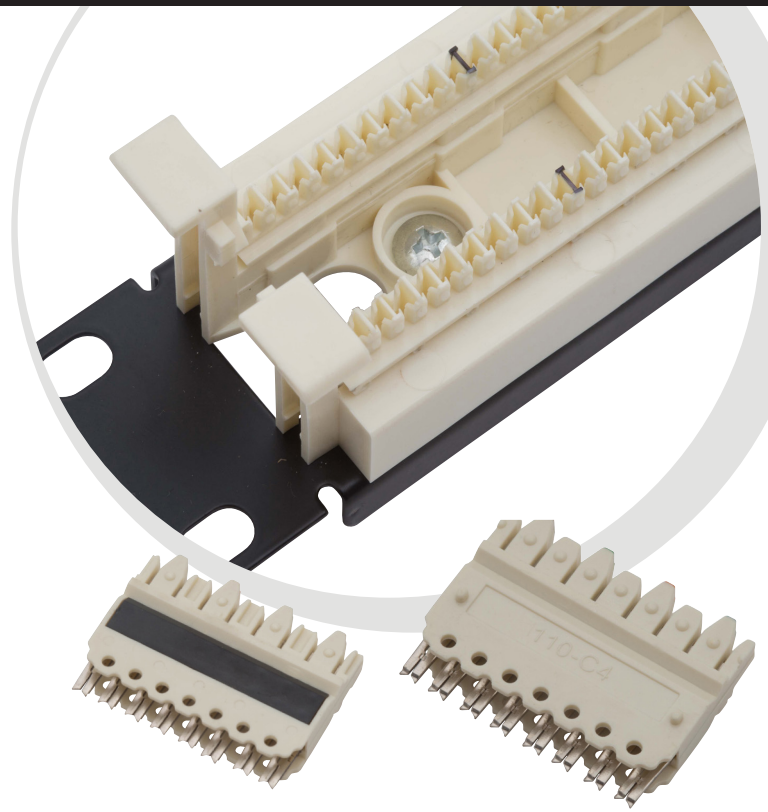
- Exceeds ANSI/TIA-568-C.2 Category 6 standard
- Factory assembled patch cord assembly
- Ideal for use in cross-connects and consolidation point applications.
- Option Variable Lengths 4,6,8,10,20 Feet.
- Available in two different configurations:
 1. 110-110 patch cord configurations are used for easy cross-connection between equipment and distribution fields.
 2. 110-RJ45 patch cord configurations are used to easily interconnect equipment utilizing 8-position modular jacks directly into 110C4/ C5 connecting blocks in the distribution field.



PART NO.	DESCRIPTION	STD PACKAGE
O110PC1-6-110-4	Category 6 110 Patch Cord, 110-110, 1-pairs,4ft.	1
O110PC1-6-110-6	Category 6 110 Patch Cord, 110-110, 1-pairs,6ft.	1
O110PC1-6-110-8	Category 6 110 Patch Cord, 110-110, 1-pairs,8ft.	1
O110PC1-6-110-10	Category 6 110Patch Cord, 110-110, 1-pairs,10ft.	1
O110PC1-6-110-20	Category 6 110 Patch Cord, 110-110, 1-pairs,20ft.	1
O110PC2-6-110-4	Category 6 110 Patch Cord, 110-110, 2-pairs,4ft.	1
O110PC2-6-110-6	Category 6 110 Patch Cord, 110-110, 2-pairs,6ft.	1
O110PC2-6-110-8	Category 6 110 Patch Cord, 110-110, 2-pairs,8ft.	1
O110PC2-6-110-10	Category 6 110 Patch Cord, 110-110, 2-pairs,10ft.	1
O110PC2-6-110-20	Category 6 110 Patch Cord, 110-110, 2-pairs,20ft	1
O110PC4-6-110-4	Category 6 110 Patch Cord, 110-110, 4-pairs,4ft.	1
O110PC4-6-110-6	Category 6 110 Patch Cord, 110-110, 4-pairs,6ft.	1
O110PC4-6-110-8	Category 6 110 Patch Cord, 110-110, 4-pairs,8ft.	1
O110PC4-6-110-10	Category 6 110 Patch Cord, 110-110, 4-pairs,10ft.	1
O110PC4-6-110-20	Category 6 110 Patch Cord, 110-110, 4-pairs,20ft	1
O110PC4-6-RJ45A-4	Category 6 110 Patch Cord, 110-RJ45, 4-pairs T568A,4ft	1
O110PC4-6-RJ45A-6	Category 6 110 Patch Cord, 110-RJ45, 4-pairs T568A,6ft	1
O110PC4-6-RJ45A-8	Category 6 110 Patch Cord, 110-RJ45, 4-pairs T568A,8ft	1
O110PC4-6-RJ45A-10	Category 6 110 Patch Cord, 110-RJ45, 4-pairs T568A,10ft	1
O110PC4-6-RJ45A-20	Category 6 110 Patch Cord, 110-RJ45, 4-pairs T568A,20ft	1
O110PC4-6-RJ45B-4	Category 6 110 Patch Cord, 110-RJ45, 4-pairs T568B,4ft	1
O110PC4-6-RJ45B-6	Category 6 110 Patch Cord, 110-RJ45, 4-pairs T568B,6ft	1
O110PC4-6-RJ45B-8	Category 6 110 Patch Cord, 110-RJ45, 4-pairs T568B,8ft	1
O110PC4-6-RJ45B-10	Category 6 110 Patch Cord, 110-RJ45, 4-pairs T568B,10ft	1
O110PC4-6-RJ45B-20	Category 6 110 Patch Cord, 110-RJ45, 4-pairs T568B,20ft	1

FEATURES AND BENEFITS

- Exceeds ANSI/TIA-568-C.2 Category 5E standard
- Ideal for use in cross-connects and consolidation point applications
- Kits consist of one Wiring Block (100-pair or 300-pair) with legs, Connecting Blocks (4-pair or 5-pair), Designation Strips and Labels.
- Available in 100 or 300-pair bases with 3, 4, or 5-pair connecting blocks
- Contain all material required to terminate distribution or equipment cables into a 110 Cross-Connect System.
- Available in Category 5e 19" Rack Mount Panels or Kit.



PART NO.	DESCRIPTION	STD PACKAGE
O110CB-5E-100-KIT4	Category 5E 110 Cross-Connect Kit, 100-pair, with 4-pair Connecting Blocks	1
O110CB-5E-100-KIT5	Category 5E 110 Cross-Connect Kit, 100-pair, with 5-pair Connecting Blocks	1
O110CB-5E-300-KIT4	Category 5E 110 Cross-Connect Kit, 300-pair, with 4-pair Connecting Blocks	1
O110CB-5E-300-KIT5	Category 5E 110 Cross-Connect Kit, 300-pair, with 5-pair Connecting Blocks	1
O110CB-5E-36P-KIT4	19 " Category 5E 110 Cross-Connect Kit, 2X144 Pairs (36 Ports), with 4-pair Connecting Blocks	1
O110CB-5E-24P-KIT4	19 " Category 5E 110 Cross-Connect Kit, 2X96 Pairs (24 Ports), with 4-pair Connecting Blocks	1

CONNECTING BLOCKS

CATEGORY 5E

FEATURES AND BENEFITS

- Exceeds ANSI/TIA-568-C.2 Category 5E standard.
- Equipped with double-sided Insulation Displacement Connection (IDC) clips that are used to terminate plastic insulated solid copper conductors in 110 Wiring Blocks.
- Available in 4 or 5-pair connection blocks.
- Can be terminated with single or multiple position punch down tools
- Constructed of UL 94V-0 high impact polycarbonate material.



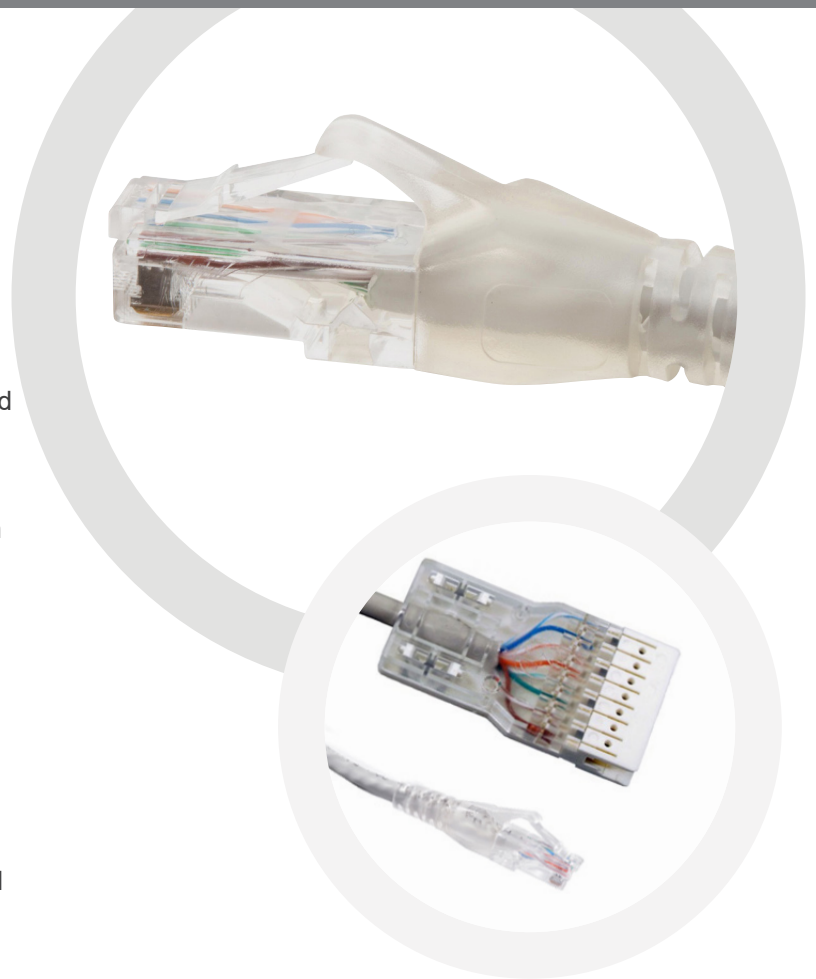
PART NO.	DESCRIPTION	STD PACKAGE
O110-5E-CB4	Category 5E 4-pair Category 5E punch down connecting block.	10
O110-5E-CB5	Category 5E 5-pair Category 5E punch down connecting block.	10

PATCH CORD ASSEMBLIES

CATEGORY 5E

FEATURES AND BENEFITS

- Exceeds ANSI/TIA-568-C.2 Category 5e standard
- Factory assembled patch cord assembly
- Ideal for use in cross-connects and consolidation point applications.
- Option Variable Lengths 4,6,8,10,20 Feet.
- Available in two different configurations:
 1. 110-110 patch cord configurations are used for easy cross-connection between equipment and distribution fields.
 2. 110-RJ45 patch cord configurations are used to easily interconnect equipment utilizing 8-position modular jacks directly into 110C4/ C5 connecting blocks in the distribution field.

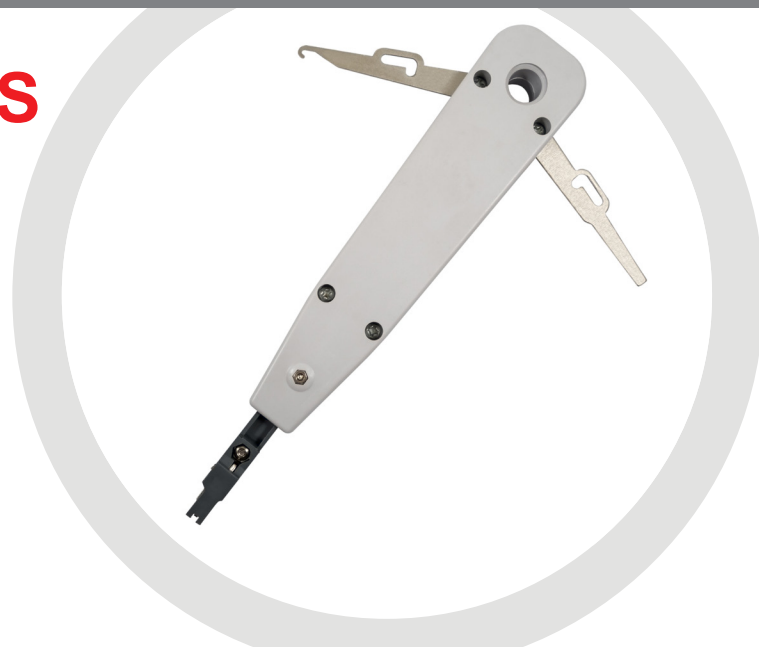


PART NO.	DESCRIPTION	STD PACKAGE
O110PC1-6-110-4	Category 6 110 Patch Cord, 110-110, 1-pairs,4ft.	1
O110PC1-6-110-6	Category 6 110 Patch Cord, 110-110, 1-pairs,6ft.	1
O110PC1-6-110-8	Category 6 110 Patch Cord, 110-110, 1-pairs,8ft.	1
O110PC1-6-110-10	Category 6 110Patch Cord, 110-110, 1-pairs,10ft.	1
O110PC1-6-110-20	Category 6 110 Patch Cord, 110-110, 1-pairs,20ft.	1
O110PC2-6-110-4	Category 6 110 Patch Cord, 110-110, 2-pairs,4ft.	1
O110PC2-6-110-6	Category 6 110 Patch Cord, 110-110, 2-pairs,6ft.	1
O110PC2-6-110-8	Category 6 110 Patch Cord, 110-110, 2-pairs,8ft.	1
O110PC2-6-110-10	Category 6 110 Patch Cord, 110-110, 2-pairs,10ft.	1
O110PC2-6-110-20	Category 6 110 Patch Cord, 110-110, 2-pairs,20ft	1
O110PC4-6-110-4	Category 6 110 Patch Cord, 110-110, 4-pairs,4ft.	1
O110PC4-6-110-6	Category 6 110 Patch Cord, 110-110, 4-pairs,6ft.	1
O110PC4-6-110-8	Category 6 110 Patch Cord, 110-110, 4-pairs,8ft.	1
O110PC4-6-110-10	Category 6 110 Patch Cord, 110-110, 4-pairs,10ft.	1
O110PC4-6-110-20	Category 6 110 Patch Cord, 110-110, 4-pairs,20ft	1
O110PC4-6-RJ45A-4	Category 6 110 Patch Cord, 110-RJ45, 4-pairs T568A,4ft	1
O110PC4-6-RJ45A-6	Category 6 110 Patch Cord, 110-RJ45, 4-pairs T568A,6ft	1
O110PC4-6-RJ45A-8	Category 6 110 Patch Cord, 110-RJ45, 4-pairs T568A,8ft	1
O110PC4-6-RJ45A-10	Category 6 110 Patch Cord, 110-RJ45, 4-pairs T568A,10ft	1
O110PC4-6-RJ45A-20	Category 6 110 Patch Cord, 110-RJ45, 4-pairs T568A,20ft	1
O110PC4-6-RJ45B-4	Category 6 110 Patch Cord, 110-RJ45, 4-pairs T568B,4ft	1
O110PC4-6-RJ45B-6	Category 6 110 Patch Cord, 110-RJ45, 4-pairs T568B,6ft	1
O110PC4-6-RJ45B-8	Category 6 110 Patch Cord, 110-RJ45, 4-pairs T568B,8ft	1
O110PC4-6-RJ45B-10	Category 6 110 Patch Cord, 110-RJ45, 4-pairs T568B,10ft	1
O110PC4-6-RJ45B-20	Category 6 110 Patch Cord, 110-RJ45, 4-pairs T568B,20ft	1

PUNCH DOWN TOOLS AND ACCESSORIES

FEATURES AND BENEFITS

- Terminate wires on both cable and cross-connect sides of 110 connecting blocks
- Available in two types
 1. Single pair Punch down tool.
 2. 5-pair Punch down tool for 3, 4, or 5-pair connecting blocks onto 110 bases.



PART NO.	DESCRIPTION	STD PACKAGE
O110PC1	Category 5e 110 Patch Cord Connector, 1-pair, Terminates 4-pairs, 24 AWG solid or stranded cable.	10
O110PC2	Category 5e 110 Patch Cord Connector, 2-pair, Terminates 4-pairs, 24 AWG solid or stranded cable.	10
O110PC4	Category 5e 110 Patch Cord Connector, 4-pair, Terminates 4-pairs, 24 AWG solid or stranded cable.	10

110 DESIGNATION STRIP AND MANAGEMENT ACCESSORIES

FEATURES AND BENEFITS

- Cable Management Troughs are utilized as channels positioned between wiring blocks for horizontal or vertical dressing of cross-connect wires and patch cords. They are available with and without mounting legs.
- 110 Designation Strip is designed to be used in conjunction with all 110 Wiring Blocks. It snaps in between two rows of 110 Connecting Blocks and provides space to insert a designation label. The strip is made of clear PVC.



PART NO.	DESCRIPTION	STD PACKAGE
O110PD-5	5-pair punch down tool.	1
O110PD-1	Single pair Punch down tool.	1

FACEPLATES & OUTLETS

MOUNTING HARDWARE

OSILAN's Work area outlets products are easily installed and provide a broad range of solutions.

Outlets solutions consist of a variety of faceplate styles and port densities, including tamper resistant and water resistant options. Surface mount boxes are available in shuttered and non-shuttered versions.

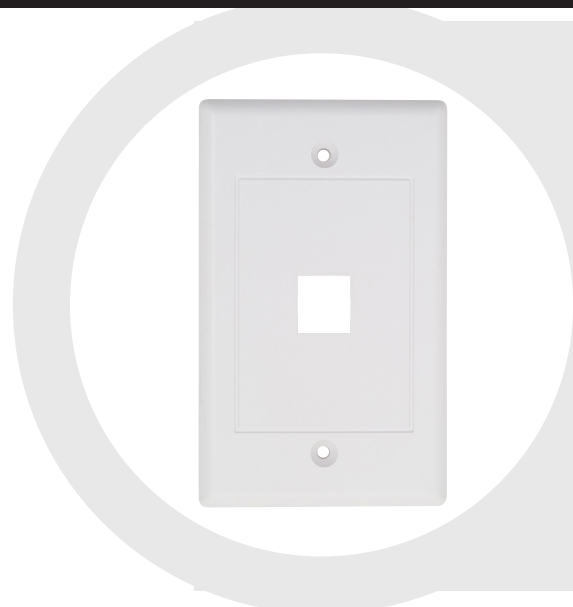


FEATURES AND BENEFITS

- Accept Modules for STP and UTP, fibre optic which snap in and out for easy moves, add, and changes.
- Temper Resistance and Water resistance are available.
- Available Style and Types
 1. UK Style (UK Installation Environments)
 2. US Style (US Installation Environments)
 3. Impact-resistant 304 stainless steel types suitable or light industrial environments.
 4. Water Resistance (Meets the level of protection required for an IP56 enclosure and Sloped design improves bend radius control)
 5. Multi-Media/Fiber Surface Mount Boxes (built-in fibre spool design secures cable in place and stores up to 20 meter of buffered fibre optic cable).
 6. Surface Mount Boxes (Used for Copper Modules)
- Include label/label covers for easy port identification
- Replacement label/label covers available
- Optional icons available.
- Colour option: White (WH), off white (IW) and Electric Ivory (EI).
- Operating Temperature Range -10°C to +60°C
- Storage Temperature Range -40°C to +68°C.
- Relative Humidity 10% to 90% RH.
- Back Boxes are available in Plastic and Stainless steel ,
- Also in different Sizes (86mmx86mm, 146.5 x 86mm) and Different Deeps (27mm,37mm,47mm)
- Each faceplate is complete with mounting screws and screw covers to finish the look

US STYLE

70MM X110MM



PART NO.	DESCRIPTION
OUS-1-WH	Single gang, Horizontal faceplate accepts One Modules, White
OUS-2-WH	Single gang, Horizontal faceplate accepts Two Modules, White
OUS-4-WH	Single gang, Horizontal faceplate accepts Four Modules, White
OUS-1-IW	Single gang, Horizontal faceplate accepts One Modules, Off White
OUS-2-IW	Single gang, Horizontal faceplate accepts Two Modules, Off White
OUS-4-IW	Single gang, Horizontal faceplate accepts Four Modules, Off white

UK STYLE

86MM X86MM

PART NO.	DESCRIPTION
OUK-1SH-WH	Single gang, Horizontal faceplate, UK Style, Shuttered accepts One Modules White
OUK-2SH-WH	Single gang, Horizontal faceplate, UK Style, Shuttered accepts Two Modules White
OUK-4SH-WH	Single gang, Horizontal faceplate, UK Style, Shuttered accepts Four Modules White
OUK-1-WH	Single gang, Horizontal faceplate, UK Style, accepts One Modules White
OUK-2-WH	Single gang, Horizontal faceplate, UK Style , accepts Two Modules White
OUK-2SH-45-WH	Single Ganges, Horizontal Face Plates, UK Style 45° Angled, Shuttered Accept 2 Modules White
OUK-1SH-IW	Single gang, Horizontal faceplate, UK Style ,Shuttered accepts One Modules Off White
OUK-2SH-IW	Single gang, Horizontal faceplate, UK Style, Shuttered accepts Two Modules Off White
OUK-4SH-IW	Single gang, Horizontal faceplate, UK Style, Shuttered accepts Four Modules Off White
OUK-1-IW	Single gang, Horizontal faceplate, UK Style , accepts One Modules Off White
OUK-2-IW	Single gang, Horizontal faceplate, UK Style , accepts Two Modules Off White
OUK-2SH-45-IW	Single Ganges, Horizontal Face Plates, UK Style 45° Angled, Shuttered Accept 2 Modules Off White

WATER RESISTANT FACEPLATES

147.32 MM X 78.74 MM X 38.10 MM (HXWXD)

PART NO.	DESCRIPTION
OWR-4-EI	Single gang, vertical water resistant faceplate accepts four Modules with Clear Cover Colour Electric Ivory
OWR-4-WH	Single gang, vertical water resistant faceplate accepts four Modules with Clear Cover Colour White
OWR-4-IW	Single gang, vertical water resistant faceplate accepts four Modules with Clear Cover Colour Off white

BACK BOXES

PART NO.	DESCRIPTION
OS-BBP-1-27-WH	Single Gang Back box Size : 86mm x 86mm, 27mm Deep White
OS-BBP-2-27-WH	Double Gang Back Box Size : 146.5mm x 86mm,27mm Deep White
OS-BBS-1-27	Single Gang Back box Size : 86mm x 86mm, 27mm Deep Stainless Steel
OS-BBP-1-37-WH	Single Gang Back box Size : 86mm x 86mm, 37mm Deep White
OS-BBP-2-37-WH	Double Gang Back Box Size : 146.5mm x 86mm,37mm Deep White
OS-BBS-1-37	Single Gang Back box Size : 86mm x 86mm, 37mm Deep Stainless Steel
OS-BBP-1-47-WH	Single Gang Back box Size : 86mm x 86mm, 47mm Deep , White
OS-BBP-2-47-WH	Double Gang Back Box Size : 146.5mm x 86mm,47mm Deep, White
OS-BBS-1-47	Single Gang Back box Size : 86mm x 86mm, 47mm Deep , Stainless Steel





COOPER TOOLS
&
TESTERS

COPPER TOOLS & TESTERS

OSILAN's cable tester range can be used to verify the connections of wired and other network equipment within the working environment.

A range of cable testers are offered by Osilan including network cable testers, HDMI testers, digital tone tracers and enhanced network scanners. The range includes light driven through to display screen diagnostic options. All of Osilan's cable testers have been designed to meet the requirements of high capacity networking equipment.

APPLICATIONS

- Copper structured cabling networks
- Installation
- Termination
- Maintenance
- Testing



COPPER TOOLS & TESTERS

PART NO.	DESCRIPTION
OCPT	Cable Preparation Tool
OPCT	Patch Cord Tool
ONCT	Copper Crimping Tool ,Crimps RJ45, RJ12 and RJ11 plug types
O110PD-5	5-pair punch down tool.
O110PD-1	Single pair Punch down tool.
ONMT	Network Multi-Cable Tester:
ONCTS	Network Cable Tester With Screen
OWT	Wire Tracker
ONETK	Network Ethernet Cable Tester RJ45 Kit including RJ45 Crimper Crimping Tool Punch Down RJ11 Cat5 Cat6 Wire Line Detector

COPPER CRIMPING TOOL

FEATURES AND BENEFITS

- Crimps RJ45, RJ12 and RJ11 plug types.
- 8P8C/RJ45, 6P6C/RJ12, 6P4C/ RJ11, RJ45 (Cat.6 8P8C).
- Strips and cuts copper cables.



CABLE PREPARATION TOOL

FEATURES AND BENEFITS

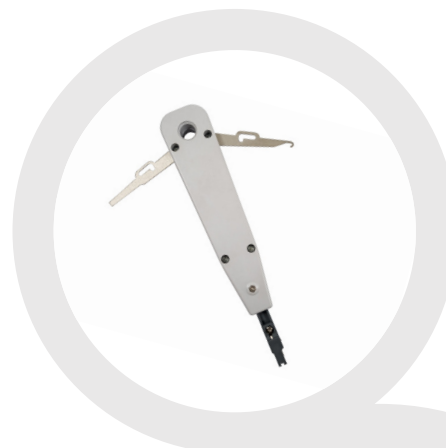
- Cable Preparation Tool makes it faster and easier to prepare cables for connector termination.
- Providing special features that help separate twisted pairs.



PUNCH DOWN TOOL AND ACCESSORIES

FEATURES AND BENEFITS

- Terminate wires on both cable and cross-connect sides of 110 connecting blocks
- Available in two types
 1. Single pair Punch down tool.
 2. 5-pair Punch down tool for 3, 4, or 5-pair connecting blocks onto 110 bases



NETWORK MULTI-CABLE TESTER

FEATURES AND BENEFITS

- Tests RJ45, RJ11, IEEE 1394, USB and BNC
- Checks for cable continuity, Wrong wiring, open, short, crossover and grounding
- Very easy operation with LED indicators
- Maximum cable length of 600 feet.



NETWORK CABLE TESTER WITH SCREEN

FEATURES AND BENEFITS

- Detect line wiring fault, open circuit, short circuit, including: cross connection, reverse connection and series wound.
- Measure cable length, and location of the specific location of open circuit and short circuit.
- easy to use, large screen display the test results stick out a mile



NETWORK CABLE TESTER

FEATURES AND BENEFITS

- Cable Tester for UTP STP RJ45 RJ11
- Automatic efficient scan for the miss wiring, disorder cable, open and short circuit
- Protective power switch for low power consumption
- Judge continuity of the cables or wires
- Track the cables or wires, and diagnose the break point
- Receiver the tone signal on the cables or wires (telephone line).
- Identify the state in the working telephone line (clear ring, busy).
- Send a single solid tone or a dual alternating tone to the object cables or wires.



NETWORK ETHERNET CABLE TESTER KIT

FEATURES AND BENEFITS

- Including RJ45 Crimper Crimping Tool
Punch down RJ11 Cat5 Cat6





OSILAN LTD
268 BATH ROAD
SLOUGH
BERKSHRE
SL1 4DX
UNITED KINGDOM
TEL: +44 (0) 208 133 4420

COPYRIGHT OSILAN 2021

