

PC-U5E-C0424-WH-002M

Description

Osilan's Cat5e Patch Cords are part of the cat5e cable solutions that are flexible and cost-effective solutions that fully comply with category 5/Class E standards. Cat5 Patch cords are available in U/UTP, F/UTP shielded cable and with PVC or LSZH sheath, which are ideal for most of today's LAN network requirements and specifications with designs that support 100 MHz applications.

Features

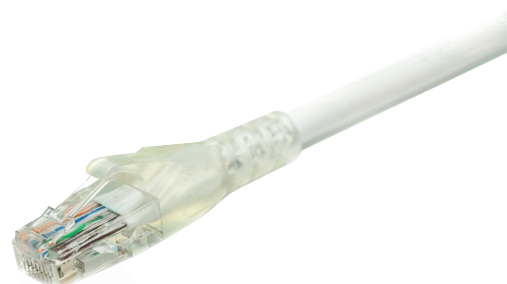
- Category 5e U/UTP patch cord.
- PVC Sheath.
- Wired to T568B wiring schemes.
- 4 Pairs, 24 AWG solid copper conductors.
- Supports IEEE 802.3bt type 3,4 & PoE++ Standards.
- Each patch cord is 100% performance tested to component limits.

Application

- Suitable for all category 5e backbone and horizontal Cabling applications.
- 10 Base-T (Ethernet), 100 Base-T (Fast Ethernet), 1000 Base-T (Gigabit Ethernet).
- 155Mb/s ATM, 622Mb/s ATM, 1.2Gb/s ATM, Token Ring 4/16 & ISDN.

Standards

- ANSI/TIA-568-C.2 Category 5e
- EN 50173-1
- ISO 11801 2nd Edition
- EN50288-6-1



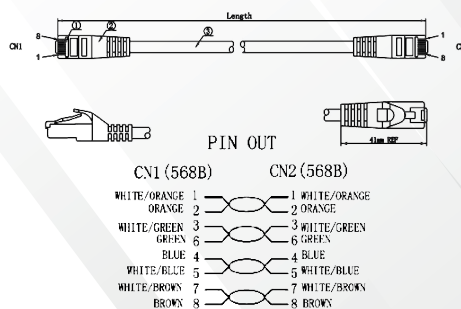
Technical Specifications

Central Element	Cross Section - Solid Polyethylene PE
Conductor	24AWG Stranded Bare Copper
Insulation	HDPE
Pairs	4 Twisted Pairs
Sheath	PVC Sheath
Outer Diameter	5.5mm (+/- 0.4mm)
Identification	Pair 1: White Blue / Blue Pair 2: White Orange / Orange Pair 3: White Green / Green Pair 4: White Brown / Brown
Connector	RJ45 8P8C including boot
Wiring Standards	T568B wiring
Temperature (Installation)	-30°C to +50°C
Temperature (Operation)	-20°C to +75°

Mechanical and Electrical Specification

Min Bend Radius	Operation: 38.5mm (4* Outer Diameter)
Standard Length	0.5m,1m,2m,3m,5m,7.5m,10m,15m,20m,30m
Mating Cycle	Minimum 350

Technical Drawings



CATEGORY 5E U/UTP PATCH CORDS, 24 AWG, PVC

Part No.	Description
PC-U5E-C0424-WH-002M	Category 5E U/UTP Patch Cord, PVC Sheath, 2 m, White

* More colours are available.