

## PC-U6A-C0424-WH-005M

### Description

Osilan's Cat6A Patch Cords are part of cat6A cable solutions that are flexible and cost-effective solutions that fully comply with category 6A/ Class EA standards. Cat6A Patch cords are available in U/UTP, U/FTP and F/FTP shielded cable and with PVC or LSZH sheath, which are ideal for most of today's LAN network requirements and specifications with designs that support 500 MHz applications.

### Features

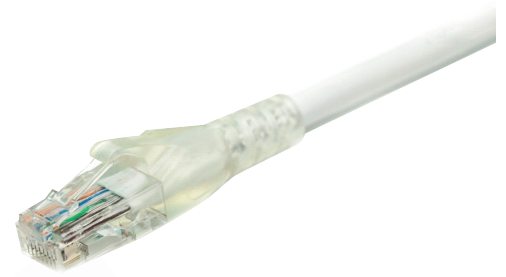
- Category 6A U/UTP patch cord.
- PVC Sheath.
- Wired to T568B wiring schemes.
- 4 Pairs, 24 AWG solid copper conductors.
- Supports IEEE 802.bt type 3,4 & PoE++ Standards.
- Each patch cord is 100% performance tested to component limits.

### Application

- Suitable for all category 6A backbone and horizontal Cabling applications.
- 10 Base-T (Ethernet), 100 Base-T (Fast Ethernet), 1000 Base-T (Gigabit Ethernet) and 10G Base-T (10Gigabit Ethernet).
- 155Mb/s ATM, 622Mb/s ATM, 1.2Gb/s ATM, Token Ring 4/16 & ISDN.
- IEEE 802.3af, IEEE 802.3at, IEEE 802.bt type 3 and 4.

### Standards

- ANSI/TIA-568-C.2 Category 6A
- EN 50173-1
- ISO 11801 2<sup>nd</sup> Edition
- EN50288-6-1



#### Technical Specifications

Central Element	Cross Section - Solid Polyethylene PE
Conductor	24AWG Stranded Bare Copper
Insulation	HDPE
Pairs	4 Twisted Pairs
Sheath	PVC Sheath
Outer Diameter	5.8mm (+/- 0.2mm)
Identification	Pair 1: White Blue / Blue Pair 2: White Orange / Orange Pair 3: White Green / Green Pair 4: White Brown / Brown
Connector	RJ45 8P8C including boot
Wiring Standards	T568B wiring
Temperature (Installation)	-30°C to +50°C
Temperature (Operation)	-20°C to +75°C

#### Mechanical and Electrical Specification

Min Bend Radius	Operation: 23.2mm (4* Outer Diameter )
Standard Length	0.5m, 1m, 2m, 3m, 5m, 7.5m, 10m, 15m, 20m, 30m
Mating Cycle	Minimum 750

### Technical Drawings



#### CATEGORY 6A U/UTP PATCH CORDS, 24 AWG, PVC

Part No.	Description
PC-U6A-C0424-WH-005M	Category 6A U/UTP Patch Cords, PVC Sheath, 5 m, White

\* More colours are available.