

JMU61801L-WH

Description

OSI-Link Cat6 snap-in jack modules complete Category 6/Class E components and performance. The RJ-45 jack modules are suitable for mounting in a range of housings from patch panels, faceplates, floor boxes, and work area distribution enclosures.

Features

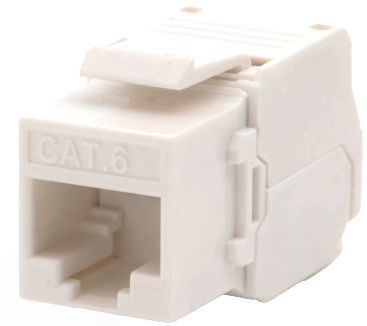
- RJ-45 Jack Modules are available with multiple colors
- Wiring Code: T568A and T568B wiring schemes.
- Terminates full range of 24 AWG conductor
- High-impact, fire-retardant plastic connector body
- Termination style can be done with 110 Compatible tools.

Application

- Suitable for all category 6 backbone and horizontal Cabling applications.
- 10 Base-T (Ethernet), 100 Base-T (Fast Ethernet), 1000 Base-T (Gigabit Ethernet).
- 155Mb/s ATM, 622Mb/s ATM, 1.2Gb/s ATM, Token Ring 4/16 & ISDN

Standards

- ANSI/TIA-568-C.2 Category 6
- EN 50173-1
- ISO 11801 2nd Edition



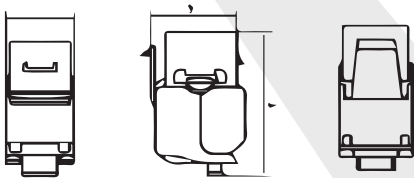
Technical Specifications

RJ 45 Jack Housing	Polycarbonate (PC) + Acrylonitrile-Butadiene-Styrene (ABS)
RJ45 Jack Contact	Phosphor bronze, Nickel Plated. Gold Plated on Plug area
IDC Housing	Polycarbonate (PC)
IDC Terminal	Phosphor Bronze, Tin Plated
IDC Cap	Polycarbonate (PC)
PCB: FR4, Thickness	1.6 mm
Wiring Code	T568A & T568B
Termination Style	IDC compatible without tools
Operating Temperature	-10°C to 60°C
Storage Temperature	-40°C to 70°C

Mechanical and Electrical Specification

Life time	Minimum 750 Insertion Cycle
Number of IDC Termination	Minimum 200 reterminations
Insertion Force	Maximum 20N
Retention Strength	7.7 Kg between Jack and Plug
Insulation Resistance	Minimum 1000 MΩ
Dielectric withstand voltage	750Vac/RMS/60Hz for 1min
Contact Resistance	Maximum 100 mΩ
Current Rating	1.5 Amp @ 20° C

Technical Drawings



COVER



CATEGORY 6 UTP KEYSTONE JACK, TOOL-LESS VERSION- BUTTERFLY STYLE

Part No.	Description
JMU61801L-WH	OSI-LINK Category 6 Unscreened butterfly style, Tool-less Keystone Jack - White

* More colour are available.