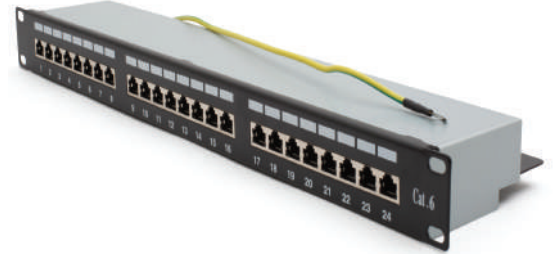


**PPI-S6-24P-1U-BL**

**Description**

Osilan's Cat6 Patch Panels comply with the current standards for enhanced Category 6/ Class E. Cat6 Patch Panels are fully loaded with cat6 RJ-45 jack modules. All ports are numerically identified with an additional writable surface for ease of port naming. Each panel has integrated rear cable management to make the installation easier. Each panel is supplied with cable ties, panel mounting accessories and short-form installation instructions.



**Features**

- Cat6 Patch Panels are loaded with Cat6 STP Keystone jack modules
- Available in 24 & 48 port capacities with 1 & 2 Rack Units designs.
- Pre-printed numbers above each port for easy identification
- Mounting on all standard 19" Racks.

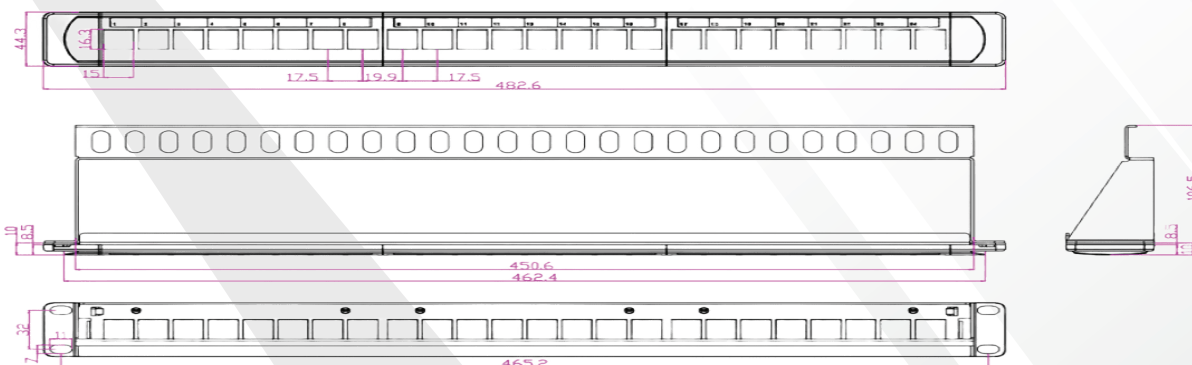
**Standards**

- ISO IEC11801
- EN 50173-1
- ANSI/EIA/TIA 568C

**Technical Specifications**

Relative Humidity	Max. non-condensing 93%
Material	High Impact, Flame retardant plastic / Cold-Rolled Steel (CRS)
Temperature (Operation)	-10°C to +60°C
Temperature (Storage)	-40°C to +70°

**Technical Drawings**



**CATEGORY 6 COMPLIANT PATCH PANEL**

Part No.	Description
PPI-S6-24P-1U-BL	Category 6, Compliant Patch Panel Loaded with 24 Screened Jack Modules, 1U Size, 19", Black