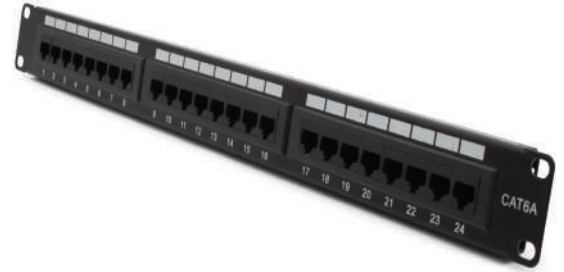


PPI-U6A-24P-1U-BL

Description

Osilan's Cat6A Patch Panels comply with the current standards for enhanced Category 6A/ Class EA. Cat6A Patch Panels are fully loaded with cat6A RJ-45 jack modules. All ports are numerically identified with an additional writable surface for ease of port naming. Each panel has integrated rear cable management to make the installation easier. Each panel is supplied with cable ties, panel mounting accessories and short-form installation instructions.



Features

- Cat6A Patch Panels are loaded with Cat6A UTP Keystone jack modules
- Available in 24 & 48 port capacities with 1 & 2 Rack Units designs.
- Pre-printed numbers above each port for easy identification
- Mounting on all standard 19" Racks.

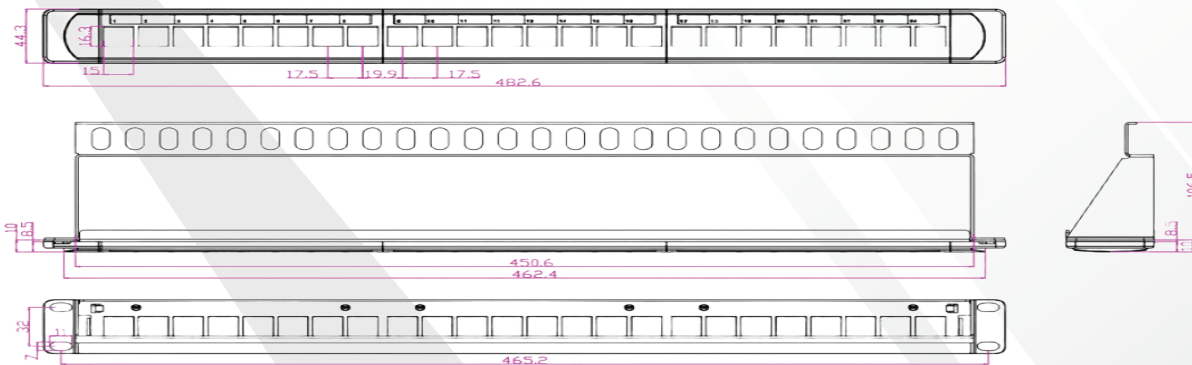
Standards

- ISO IEC11801
- EN 50173-1
- ANSI/EIA/TIA 568C

Technical Specifications

Relative Humidity	Max. non-condensing 93%
Material	High Impact, Flame retardant plastic / Cold-Rolled Steel (CRS)
Temperature (Operation)	-10°C to +60°C
Temperature (Storage)	-40°C to +70°

Technical Drawings



CATEGORY 6A COMPLIANT PATCH PANEL

Part No.	Description
PPI-U6A-24P-1U-BL	Category 6A, Compliant Patch Panel Loaded with 24 Unscreened Jack Modules, 1U Size, 19", Black