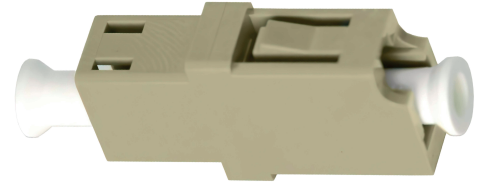


FA-LCMMMSBE

Description

Osilan's fibre adapters have been designed for installation into all Osilan's fibre Rosette Boxes (FRB Series). Fibre adapters allow users to couple one connector or more to another connector when needed. They are available in Single mode (SM) and Multimode (MM). Fibre adapters are easy to install reducing Installation time.



Features

- Optional Shuttered LC fibre adapters.
- Ferrule Split sleeves of Zirconia ceramic or phosphor bronze.
- LC fibre adapters come in Simplex or Duplex options.
- LC fibre adapters are available in standard colours.
- LC fibre adapters in flanged and flangeless design.
- Multimode LC fibre adapter types are UPC.

Standards

- ISO 11801
- IEC 61300
- IEC 61755
- IEC 61280
- TIA/EIA-568-C.3
- TIA/EIA-604

Technical Specifications

Endurance	500 mating cycles
Maximum insertion loss (IL)	0.15 dB (Standard Multi-mode)
	0.3 dB (Standard Single-mode)
Minimum return loss (RL)	40 dB (Standard Multi-mode)
	50 dB (Standard Single-mode)

Part No.	Description
FA-LCMMMSBE	LC/UPC Fibre optic adapters, Multimode, Simplex, Zirconia ceramic ferrules, Beige