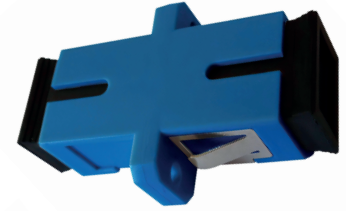


## FA-SCSMSBU

### Description

Osilan's fibre adapters have been designed for installation into all Osilan's fibre Rosette Boxes (FRB Series). Fibre adapters allow users to couple one connector or more to another connector when needed. They are available in Single mode (SM) and Multimode (MM). Fibre adapters are easy to install reducing Installation time.



### Features

- Optional Shuttered SC fibre adapters.
- Ferrule Split sleeves of Zirconia ceramic or phosphor bronze.
- SC fibre adapters come in Simplex or Duplex options.
- SC fibre adapters are available in standard colours.
- SC fibre adapters in flanged and flangeless design.
- Singlemode SC fibre adapter types are UPC and APC

### Standards

- ISO 11801
- IEC 61300
- IEC 61755
- IEC 61280
- TIA/EIA-568-C.3
- TIA/EIA-604

#### Technical Specifications

Endurance	500 mating cycles
Maximum insertion loss (IL)	0.15 dB (Standard Multi-mode)
	0.3 dB (Standard Single-mode)
Minimum return loss (RL)	40 dB (Standard Multi-mode)
	50 dB (Standard Single-mode)

Part No.	Description
FA-SCSMSBU	SC/UPC Fibre optic adapters, Singlemode, Simplex, Zirconia ceramic ferrules, Blue