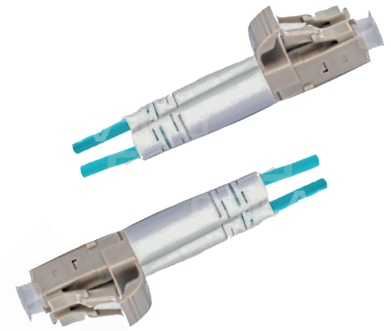


FPC-OM3LCLCD003M

Description

Osilan's fibre optic patch cords are the optimal choice for Enterprise inter-connect, data centre and cross-connect applications. Patch cords complete connectivity from active equipment to passive optical equipment in main or distribution rack rooms. Fibre optic patch cords are available in OM2, OM3, OM4 or OS2 fibre types terminated with ultra-physical contact (UPC) zirconia ferrule connectors to meet the demands of all Ethernet applications.



Features

- Duplex jacketed zip cord tight buffered.
- Standard low-insertion loss connectors.
- Halogen-free, flame-retardant LSZH jacket.
- Ferrules of Zirconia ceramic with high performance.
- Both Connectors A and B are ultra-physical contacts (UPC).

Standards

- ISO 11801 2nd Edition
- EN 60332-1
- ANSI/ICEA S-83-596
- TIA 568 C.3
- IEC 61034-2
- CSA FT4
- EN 50173
- IEC 60794-2
- CSA FT6
- EN 50575: Euroclass Eca

Mechanical and Environmental Characteristics

Cable outside diameter	3mm Simplex 1.8mm Duplex
Cable retention	50N
Endurance	500 mating cycles
Minimum Bend radius	30mm Simplex 18mm Duplex
Temperature range	-20°C to +60°C
Operating Temperature	-40°C to +70°C
Storage Temperature	-40°C to +70°C

Cable & Connector Parameters

Items	Specifications
Connector	
LC Connector	Blue
Boot	white
SC Connector	Blue
Boot	Blue
FC Connector	metal
Boot	Black
ST Connector	metal
Boot	Red / Black
Cable	
Simplex	1 fiber core
Duplex	2 fiber cores
water-blocking system	
Material	Aramid Yarn
Outer Jacket	
Material	LSZH
Colour	OS2: Yellow OM2: Orange OM3: Aqua OM4: Violet

Fibre Parameters

Items	Specifications
Cladding Diameter	124.8±0.7 µm
Cladding Non-Circularity	≤0.7%
Core-Cladding Concentricity Error	≤0.5 µm
Coating Diameter	245±5 µm
Coating Non-Circularity	≤6.0%
Cladding-Coating Concentricity Error	≤12.0 µm
ITU-T Standards	G.652.D or G.657.A1 for SM G.651.1 for MM
Attenuation	1310nm ≤0.36 dB/km
	1550nm ≤0.25 dB/km
	850 nm ≤3 dB/km 1300nm ≤1 dB/km
connector insertion loss	< 0.5 dB (Standard Multimode) < 0.3 dB (Standard Singlemode)
connector return loss	> 40 dB (Standard Multimode) > 50 dB (Standard Singlemode)

ORDERING INFORMATION

Part No.	Description
FPC-OM3LCLCD003M	LC/UPC to LC/UPC, Duplex fibre optic patch cords, OM3, 1.8mm jacket, Aqua, low smoke zero halogens (LSZH), 3 meter